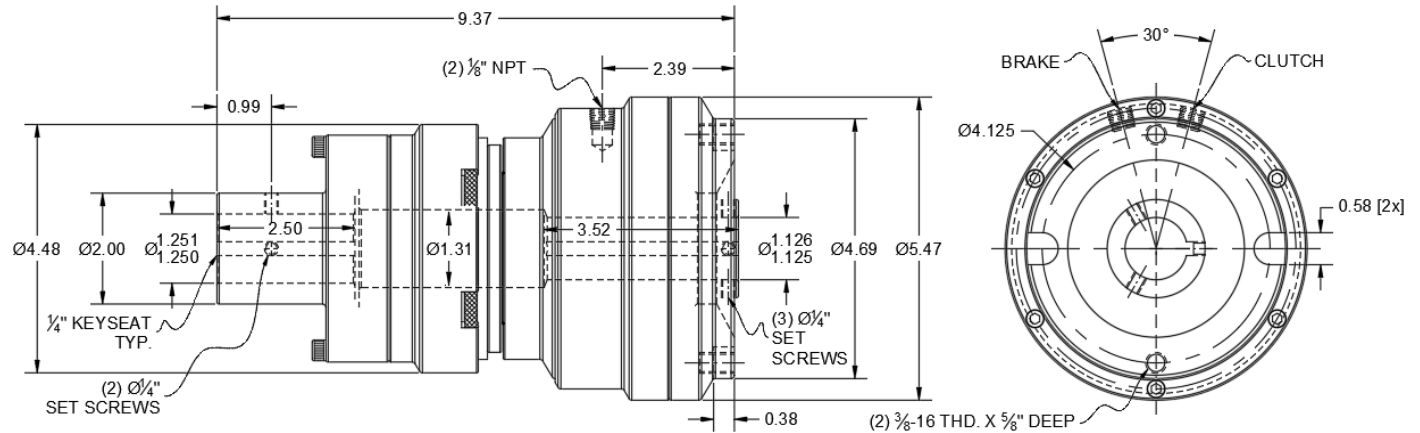




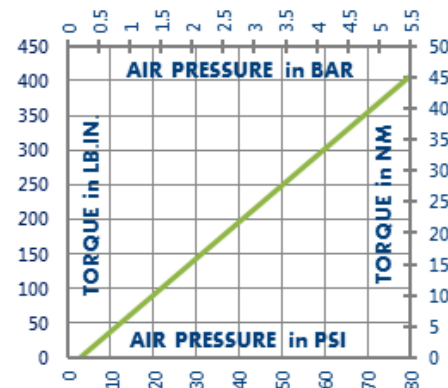
Z4A1R-001

Shaft to Shaft Mount
Combination Clutch-Brake
Stop & Start the Output Shaft

Clutch Engagement/Brake Engagement	Air/Air
Facing Type (Clutch & Brake)	Low Coefficient
Clutch Torque @ 80 PSI (max) – Dynamic	407 Pound Inches
Brake Torque @ 80 PSI (max) – Dynamic	407 Pound Inches
Maximum RPM	1,750
Bores with Standard Keyway (Input Bore / Output Bore)	1.250 / 1.125
Air Volume New (Clutch & Brake)	0.31 Cubic Inches
Air Volume Worn (Clutch & Brake)	1.60 Cubic Inches
Finish	Aluminum
Open or Enclosed Construction	Open
Shipping Weight	17 Pounds



TORQUE vs. AIR PRESSURE



NEW vs. BURNISHED TORQUE

New clutch or brake torque is approximately 40% less than rated design torque until the friction and drive discs are worn in (lapped, burnished). The length of time for wear-in to occur varies by application.

When calculating required torque always use a service factor of 1.5 to 2. It is not recommended to select a product for use at its maximum rated torque for continuous duty.

PRODUCT SELECTION

Torque capacity is only one factor to consider when making a product selection. Insure that you will have right product for the job by contacting our engineering department for application review and selection assistance.



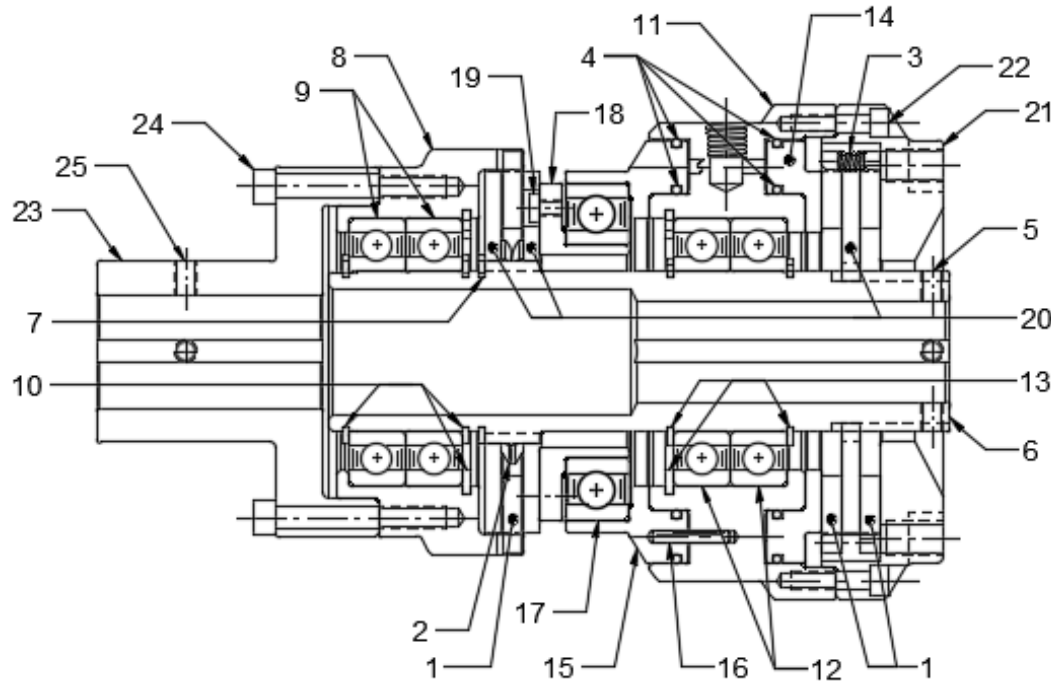
859-291-0849

engineering@machiii.com

www.machiii.com

Z4A1R-001

Parts Diagram



REF#	DESCRIPTION & PARTS INCLUDED	QUANTITY	KIT NUMBER
	REPAIR KIT		Z4A1R-001-RPRK
1	Friction Disc	3	
2	Wave Spring - Clutch	1	
3	Coil Spring - Brake	6	
4	O-Ring	4	
	DRIVE HUB KIT		Z4A1R-001-HUBK
5	Set Screw	3	
6	Drive Hub	1	
7	Retainer Ring	1	
	SLEEVE KIT		Z4A1R-STH-SLVK
8	Sleeve	1	
9	Bearing	2	
10	Retainer Ring	3	
	CYLINDER KIT		Z4A1R-STH-CYLK
11	Cylinder	1	
12	Bearing	2	
13	Retainer Ring	3	
14	PISTON - BRAKE	1	Z4A1R-STH-P0B4
	PISTON KIT - CLUTCH		Z4A1R-STH-PSTK
15	Piston	1	
16	Pin	2	
17	Bearing	1	
18	Cone	1	
19	Screw	1	
	DRIVE DISC KIT		Z4A1R-STH-DRDK
20	Drive Disc	3	
	ADAPTER KIT		Z4A1R-STH-ADPK
21	Brake Adapter	1	
22	Screw	6	
	COUPLING KIT		Z4A1R-001-CPLK
23	Coupling	1	
24	Screw	6	
25	Set Screw	2	

PARTS KITS

The *Repair Kit* contains common wear items for this product. Users are encouraged to stock one or more repair kits considering the number of units installed and the potential downtime if machinery on which the unit is installed is critical equipment. To obtain current pricing and lead time for parts kits, contact customer service.

orders@machiii.com

ADDITIONAL PRODUCT INFORMATION

Click on the links below or copy and paste into your web browser.

To view the Installation & Maintenance Manual for this product:

http://machiii.com/PDF/Product-Manuals/CLUTCHBR_AIR_SHAFT BALLBRG MANUAL.pdf

For information about the application and use of this and other Mach III products:

<http://machiii.com/Application/Default.asp>



859-291-0849

engineering@machiii.com

www.machiii.com