



Y4A2H-003

Corrosion Resistant Clutch-Brake, Stops & Starts the Pilot (Sprocket or Pulley)

Clutch Engagement/Brake Engagement

Air/Air

Facing Type (Clutch & Brake)

High Coefficient

Clutch Torque @ 80 PSI (max) – Dynamic

1,073 Pound Inches

Brake Torque @ 80 PSI (max) – Dynamic

494 Pound Inches

Maximum RPM

125

Bore with Standard Keyway

1.000

Air Volume New (Clutch / Brake)

0.36 / 0.45 Cubic Inches

Air Volume Worn (Clutch / Brake)

3.72 / 4.76 Cubic Inches

Finish

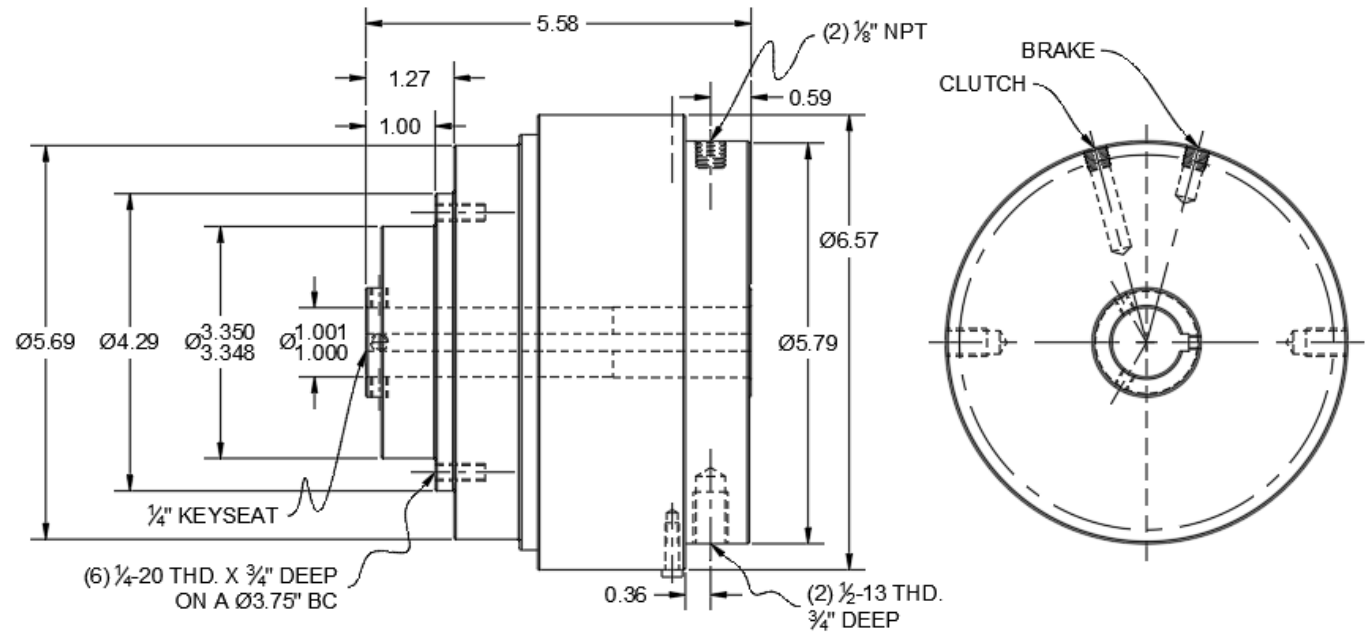
Anodized Aluminum

Open or Enclosed Construction

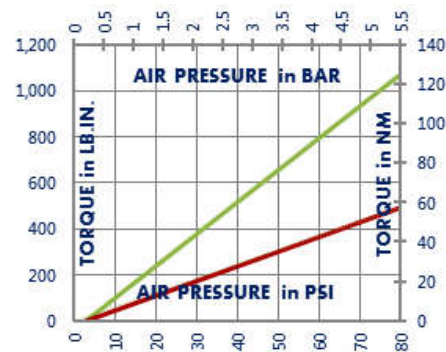
Enclosed

Shipping Weight

18 Pounds



TORQUE vs. AIR PRESSURE



NEW vs. BURNISHED TORQUE

New clutch or brake torque is approximately 40% less than rated design torque until the friction and drive discs are worn in (lapped, burnished). The length of time for wear-in to occur varies by application.

When calculating required torque always use a service factor of 1.5 to 2. It is not recommended to select a product for use at its maximum rated torque for continuous duty.

PRODUCT SELECTION

Torque capacity is only one factor to consider when making a product selection. Insure that you will have right product for the job by contacting our engineering department for application review and selection assistance.



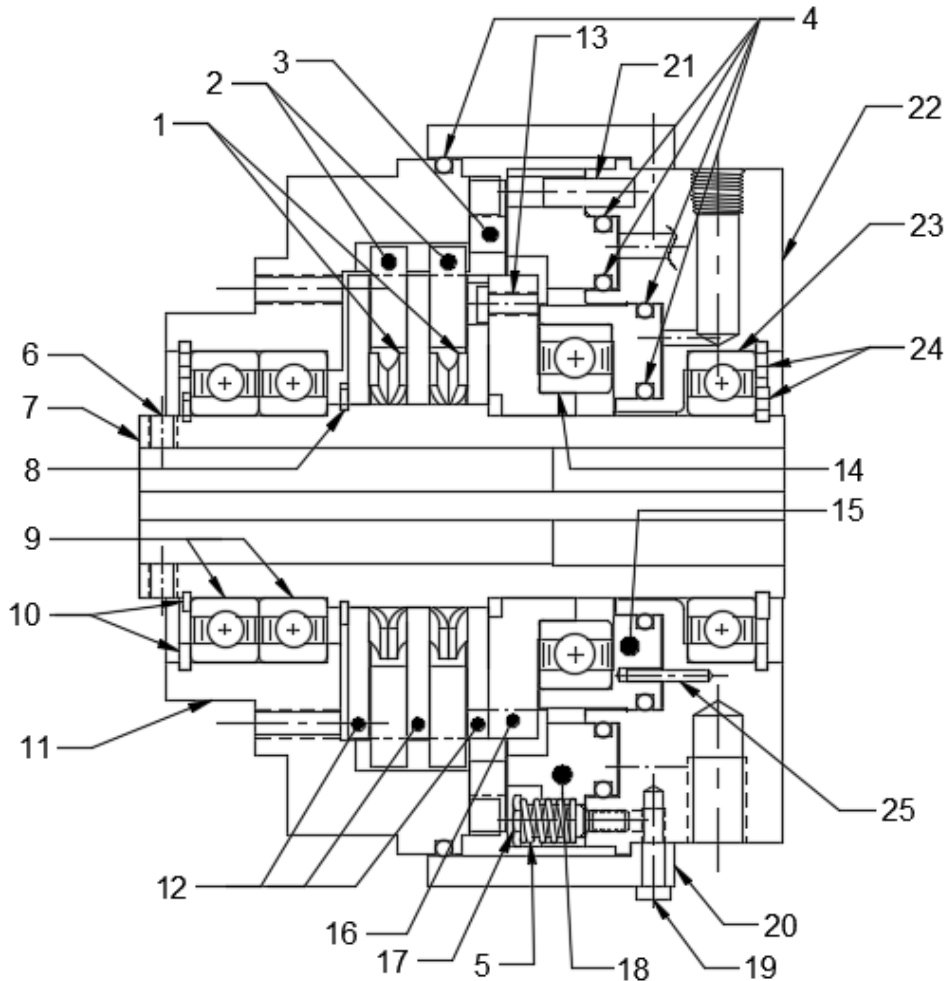
859-291-0849

engineering@machiii.com

www.machiii.com

Y4A2H-003

Parts Diagram



REF#	DESCRIPTION & PARTS INCLUDED	QUANTITY	KIT NUMBER
	REPAIR KIT		Y4A2H-003-RPRK
1	Wave Spring	2	
2	Friction Disc	2	
3	Brake Friction Disc	1	
4	O-Ring	5	
5	Coil Spring	3	
	DRIVE HUB KIT		Y4A2H-003-HUBK
6	Set Screw	2	
7	Drive Hub	1	
8	Retainer Ring	1	
	SLEEVE KIT		Y4A2H-003-SLVK
9	Bearing	2	
10	Retainer Ring	2	
11	Sleeve	1	
	DRIVE DISC KIT		Y4A2H-003-DRDK
12	Drive Disc	3	
	PISTON KIT - CLUTCH		Y4A2H-003-PSCK
13	Screw	1	
14	Bearing	1	
15	Piston-Clutch	1	
16	Cone	1	
	PISTON KIT - BRAKE		Y4A2H-003-PSBK
17	Stud	3	
18	Piston - Brake	1	
	COVER KIT		Y4A2H-003-COVK
19	Screw	2	
20	Cover	1	
	CYLINDER KIT		Y4A2H-003-CYLK
21	Pin (Brake)	6	
22	Cylinder	1	
23	Bearing	1	
24	Retainer Ring	2	
25	Pin (Clutch)	2	

PARTS KITS

The *Repair Kit* contains common wear items for this product. Users are encouraged to stock one or more repair kits considering the number of units installed and the potential downtime if machinery on which the unit is installed is critical equipment. To obtain current pricing and lead time for parts kits, contact customer service.

orders@machiii.com

ADDITIONAL PRODUCT INFORMATION

Click on the links below or copy and paste into your web browser.

Contact Mach III Engineering for Installation & Maintenance Manual for this product:
engineering@machiii.com

For information about the application and use of this and other Mach III products:
<http://machiii.com/Application/Default.asp>



859-291-0849

engineering@machiii.com

www.machiii.com