



## X4G2H-002

Through Shaft Clutch-Brake  
Integral Double-Single Sprockets  
Stop & Start the Shaft

Minimum Sprocket Size

|              |    |
|--------------|----|
| Chain Size   | 60 |
| Number Teeth | 19 |

### Clutch Engagement/Brake Engagement

Air/Spring

### Facing Type

High Coefficient

### Clutch Torque @ 80 PSI (max) – Dynamic

712 Pound Inches

### Brake Torque @ Spring Pressure (fixed)

62 Pound Inches

### Brake Release Pressure

20 - 25 PSI

### Maximum RPM

1,750

### Bore with Standard Keyway

1.250 Inches

### Air Volume New

0.8 Cubic Inches

### Air Volume Worn

1.3 Cubic Inches

### Finish

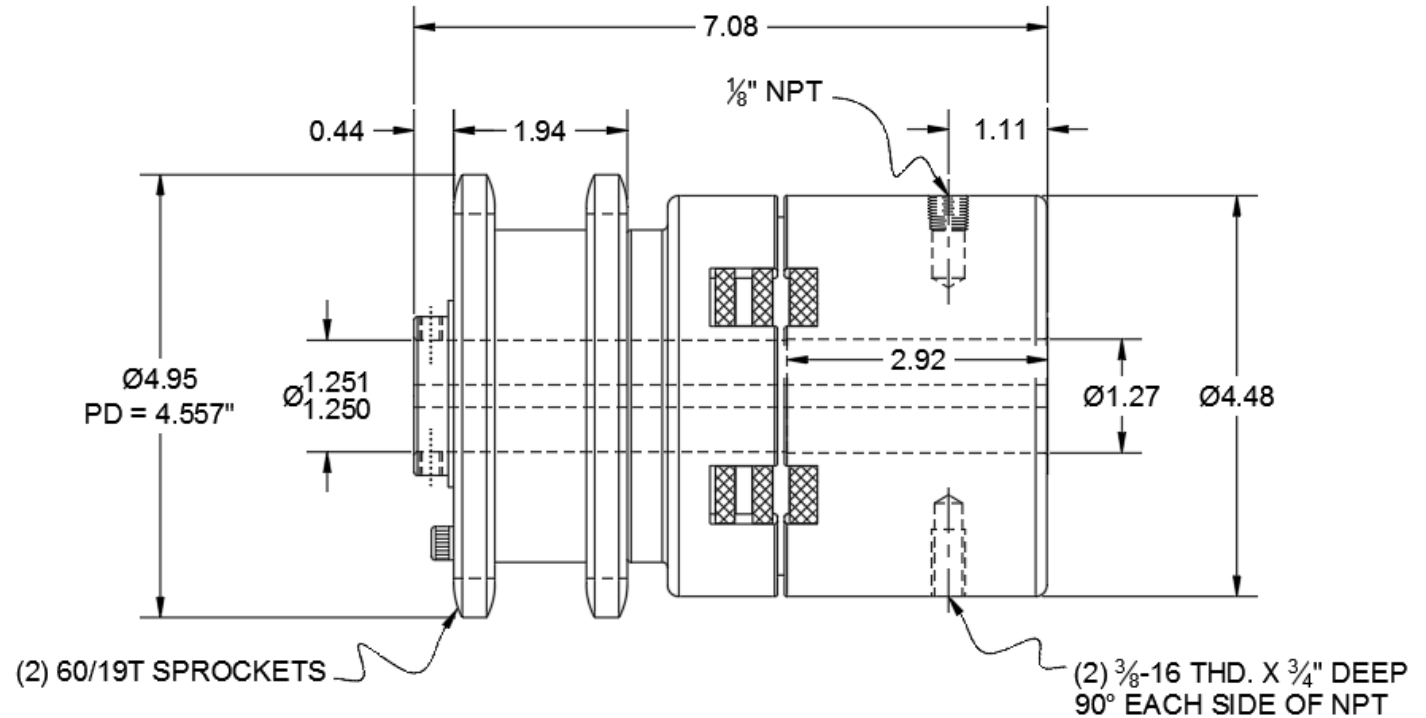
Aluminum

### Open or Enclosed Construction

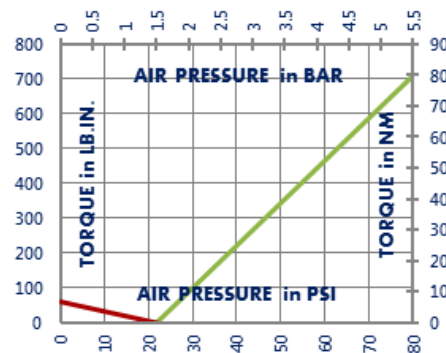
Open

### Shipping Weight

13 Pounds



### TORQUE vs. AIR PRESSURE



### NEW vs. BURNISHED TORQUE

New clutch or brake torque is approximately 40% less than rated design torque until the friction and drive discs are worn in (lapped, burnished). The length of time for wear-in to occur varies by application.

When calculating required torque always use a service factor of 1.5 to 2. It is not recommended to select a product for use at its maximum rated torque for continuous duty.

### PRODUCT SELECTION

Torque capacity is only one factor to consider when making a product selection. Insure that you will have right product for the job by contacting our engineering department for application review and selection assistance.



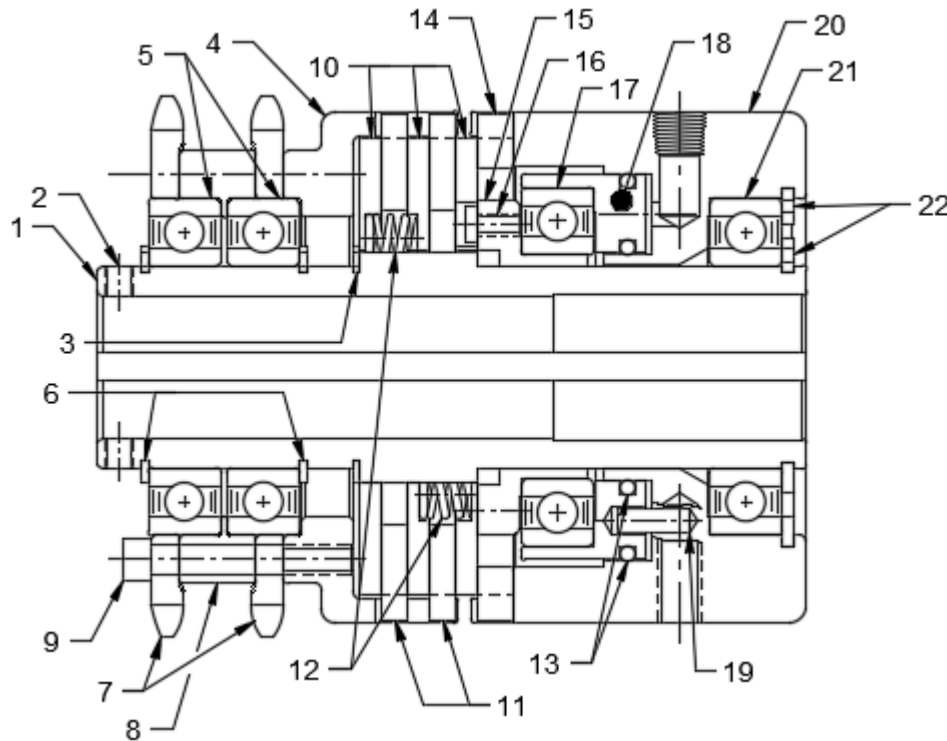
859-291-0849

engineering@machiii.com

www.machiii.com

# X4G2H-002

## Parts Diagram



| REF#                  | DESCRIPTION & PARTS INCLUDED | QUANTITY | KIT NUMBER            |
|-----------------------|------------------------------|----------|-----------------------|
| <b>DRIVE HUB KIT</b>  |                              |          | <b>X4G2H-002-HUBK</b> |
| 1                     | Drive Hub                    | 1        |                       |
| 2                     | Set Screw                    | 2        |                       |
| 3                     | Retainer Ring                | 1        |                       |
| <b>SLEEVE KIT</b>     |                              |          | <b>X4G2H-002-SLVK</b> |
| 4                     | Sleeve                       | 1        |                       |
| 5                     | Bearing                      | 2        |                       |
| 6                     | Retainer Ring                | 2        |                       |
| 7                     | Sprocket                     | 2        |                       |
| 8                     | Spacer                       | 1        |                       |
| 9                     | Screw                        | 3        |                       |
| <b>DRIVE DISC KIT</b> |                              |          | <b>W4A2H-STH-DRDK</b> |
| 10                    | Drive Disc                   | 3        |                       |
| <b>REPAIR KIT</b>     |                              |          | <b>X4G2H-002-RPRK</b> |
| 11                    | Friction Disc                | 2        |                       |
| 12                    | Spring                       | 12       |                       |
| 13                    | O-Ring                       | 2        |                       |
| 14                    | Brake Friction Disc          | 1        |                       |
| <b>PISTON KIT</b>     |                              |          | <b>X4A2H-STH-PSTK</b> |
| 15                    | Cone                         | 1        |                       |
| 16                    | Screw                        | 1        |                       |
| 17                    | Bearing                      | 1        |                       |
| 18                    | Piston                       | 1        |                       |
| <b>CYLINDER KIT</b>   |                              |          | <b>X4A2H-STH-CYLK</b> |
| 19                    | Pins                         | 6        |                       |
| 20                    | Cylinder                     | 1        |                       |
| 21                    | Bearing                      | 1        |                       |
| 22                    | Retainer Ring                | 2        |                       |

### PARTS KITS

The *Repair Kit* contains common wear items for this product. Users are encouraged to stock one or more repair kits considering the number of units installed and the potential downtime if machinery on which the unit is installed is critical equipment. To obtain current pricing and lead time for parts kits, contact customer service.

[orders@machiii.com](mailto:orders@machiii.com)

### ADDITIONAL PRODUCT INFORMATION

Click on the links below or copy and paste into your web browser.

To view the Installation & Maintenance Manual for this product:

[http://www.machiii.com/PDF/Product-Manuals/CLUTCHBR\\_SHAFT\\_DBLSPKT\\_MANUAL.pdf](http://www.machiii.com/PDF/Product-Manuals/CLUTCHBR_SHAFT_DBLSPKT_MANUAL.pdf)

For information about the application and use of this and other Mach III products:

<http://machiii.com/Application/Default.asp>



859-291-0849

[engineering@machiii.com](mailto:engineering@machiii.com)

[www.machiii.com](http://www.machiii.com)