



T3C1H-003

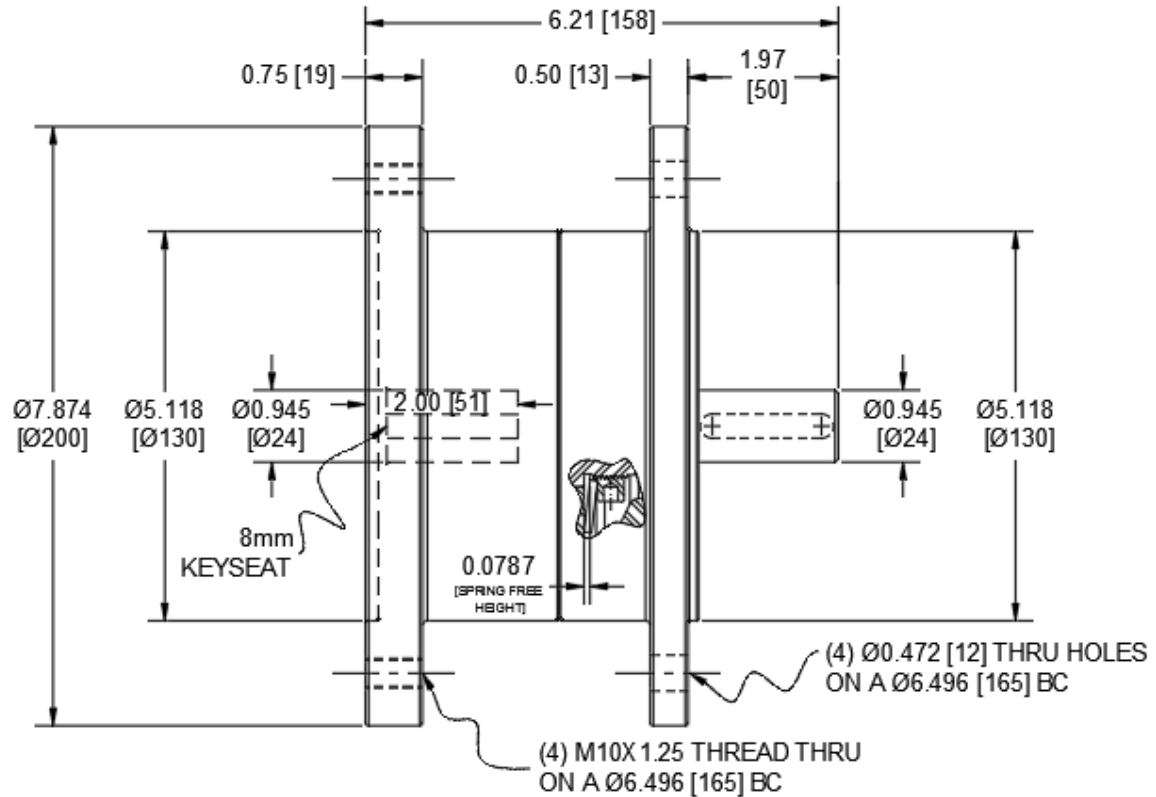
IEC Frame Torque Limiter

Frame 90, B5 Flange

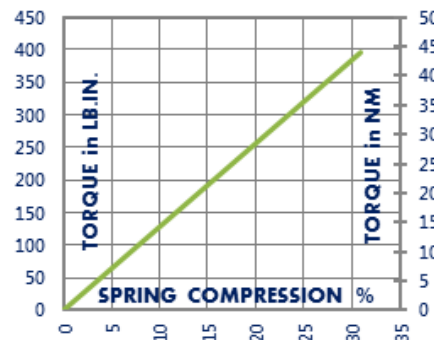
Momentary Overload Protection

NOT suitable for pulley output

| | |
|--------------------------------------|---------------------|
| Engagement/Disengagement | Spring/None |
| Facing Type | Low Coefficient |
| Factory Torque Setting +/-10% | 105 Pound Inches |
| Maximum RPM | 1,750 |
| Input Bore/Output Shaft | 24mm [0.945 inches] |
| Finish | Aluminum |
| Open or Enclosed Construction | Enclosed |
| Shipping Weight | 13 Pounds |



TORQUE vs. SPRING PRESSURE



NEW vs. BURNISHED TORQUE

New clutch or brake torque is approximately 40% less than rated design torque until the friction and drive discs are worn in (lapped, burnished). The length of time for wear-in to occur varies by application.

When calculating required torque always use a service factor of 1.5 to 2. It is not recommended to select a product for use at its maximum rated torque for continuous duty.

PRODUCT SELECTION

Torque capacity is only one factor to consider when making a product selection. Insure that you will have right product for the job by contacting our engineering department for application review and selection assistance.



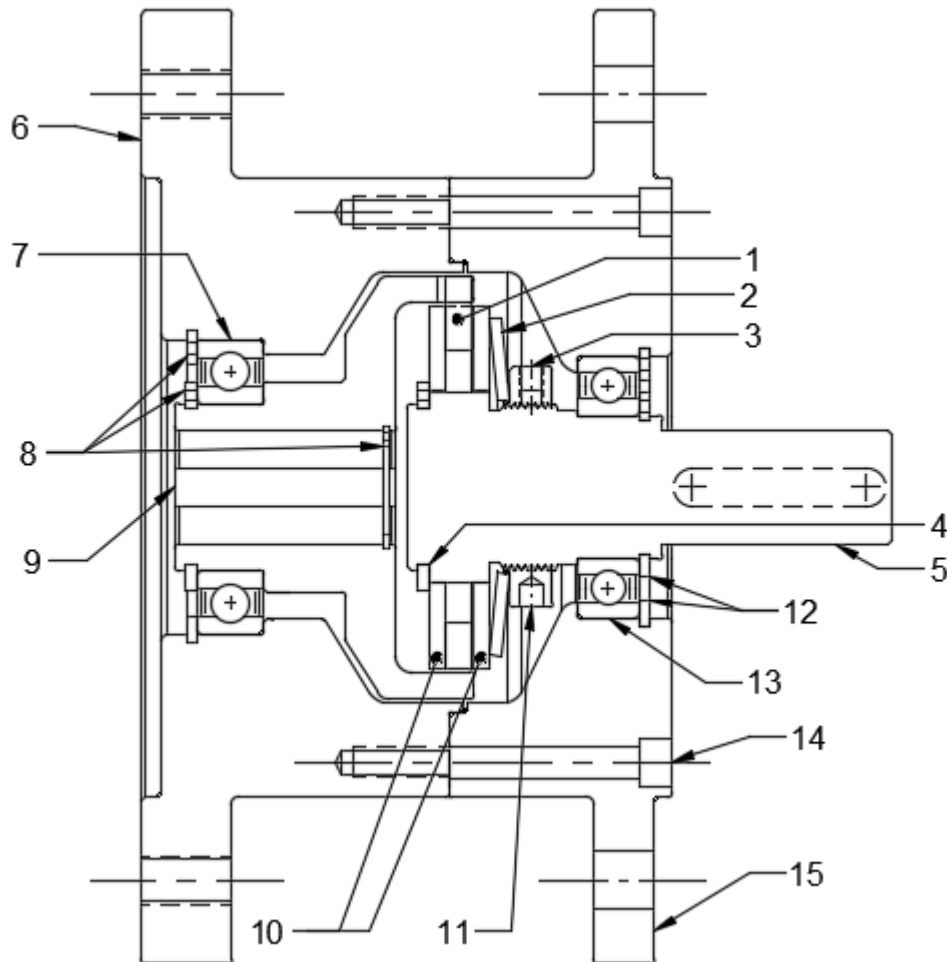
859-291-0849

engineering@machiii.com

www.machiii.com

T3C1H-003

Parts Diagram



| REF# | DESCRIPTION & PARTS INCLUDED | QUANTITY | KIT NUMBER |
|------|------------------------------|----------|-----------------------|
| | REPAIR KIT | | T3C1H-003-RPRK |
| 1 | Friction Disc | 1 | |
| 2 | Disc Spring | 1 | |
| 3 | Nylon Point Set Screw | 1 | |
| | DRIVE HUB KIT | | T3C1H-003-HUBK |
| 4 | Retainer Ring | 1 | |
| 5 | Drive Hub | 1 | |
| | SLEEVE KIT | | T3C1H-003-SLVK |
| 6 | Adapter Female | 1 | |
| 7 | Bearing | 1 | |
| 8 | Retainer Ring | 3 | |
| 9 | Sleeve | 1 | |
| | DRIVE DISC KIT | | T3C1H-003-DRDK |
| 10 | Drive Disc | 2 | |
| | FACING KIT | | T3C1H-003-FCGK |
| 1 | Friction Disc | 1 | |
| 3 | Nylon Point Set Screw | 1 | |
| | NUT KIT | | 3000-NUTK |
| 3 | Nylon Point Set Screw | 1 | |
| 11 | Nut | 1 | |
| | ADAPTER KIT | | T3C1H-003-ADPK |
| 12 | Retainer Ring | 2 | |
| 13 | Bearing | 1 | |
| 14 | Screw | 6 | |
| 15 | Adapter Male | 1 | |

PARTS KITS

The *Repair Kit* contains common wear items for this product. Users are encouraged to stock one or more repair kits considering the number of units installed and the potential downtime if machinery on which the unit is installed is critical equipment. To obtain current pricing and lead time for parts kits, contact customer service.

orders@machiii.com

ADDITIONAL PRODUCT INFORMATION

Click on the links below or copy and paste into your web browser.

To view the Installation & Maintenance Manual for this product:
http://www.machiii.com/PDF/Product-Manuals/TORQLIM_NEMA_MANUAL.pdf

For information about the application and use of this and other Mach III products:
<http://machiii.com/Application/Default.asp>



859-291-0849

engineering@machiii.com

www.machiii.com