

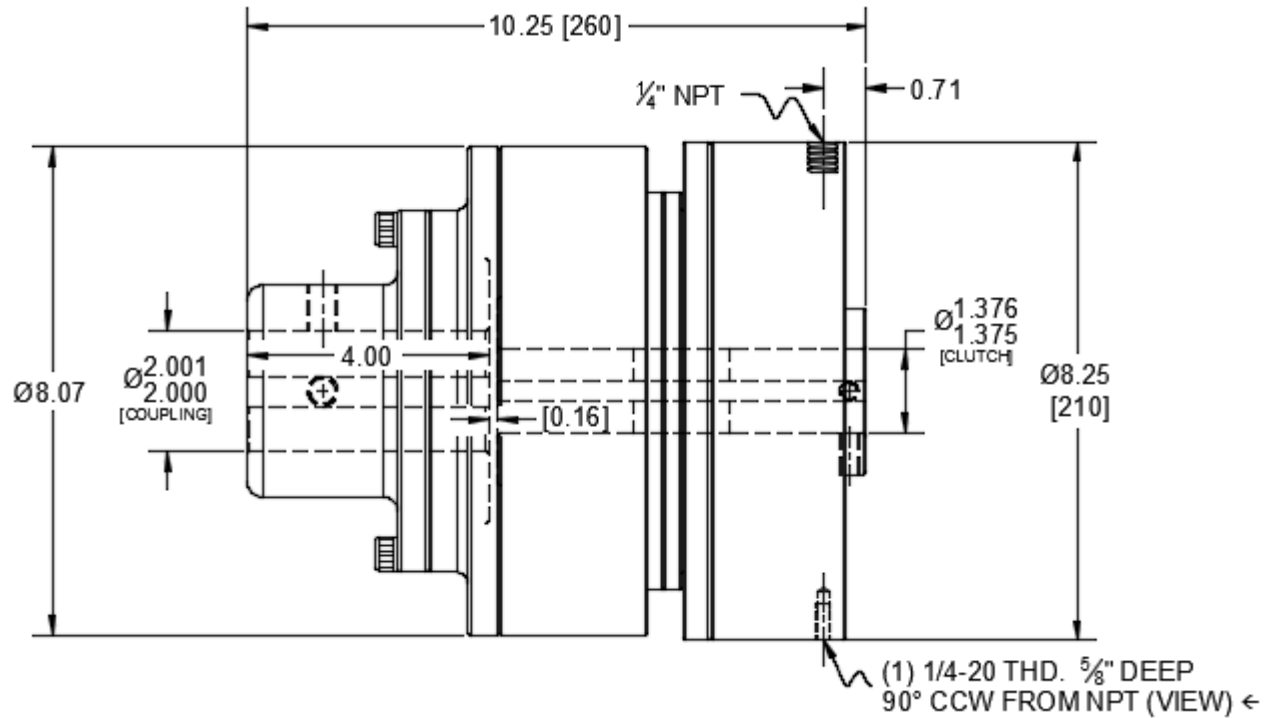
Friction Clutch – Spring Applied
 Shaft to Shaft Mount - Coupling



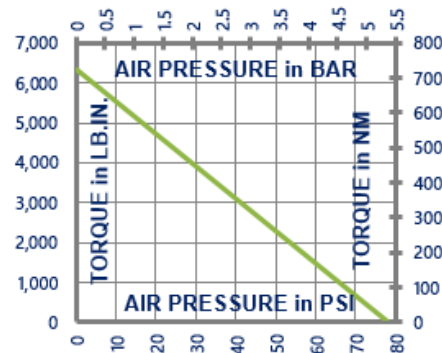
L6G3K-001

Mechanism DOES NOT support Coupling

Engagement/Disengagement	Spring/Air
Facing Type	High Coefficient
Torque @ 0 PSI – Dynamic	6,342 Pound Inches
Minimum Disengagement Pressure	78 PSI
Maximum Operating Pressure	90 PSI
Maximum RPM	1,650
Bore with Standard Keyway	1.375 Inches [Clutch] / 2.000 Inches [Coupling]
Air Volume / Cycle	3.37 Cubic Inches
Finish	Aluminum
Open or Enclosed Construction	Open
Shipping Weight	45 Pounds



TORQUE vs. AIR PRESSURE



NEW vs. BURNISHED TORQUE

New clutch or brake torque is approximately 40% less than rated design torque until the friction and drive discs are worn in (lapped, burnished). The length of time for wear-in to occur varies by application.

When calculating required torque always use a service factor of 1.5 to 2. It is not recommended to select a product for use at its maximum rated torque for continuous duty.

PRODUCT SELECTION

Torque capacity is only one factor to consider when making a product selection. Insure that you will have right product for the job by contacting our engineering department for application review and selection assistance.



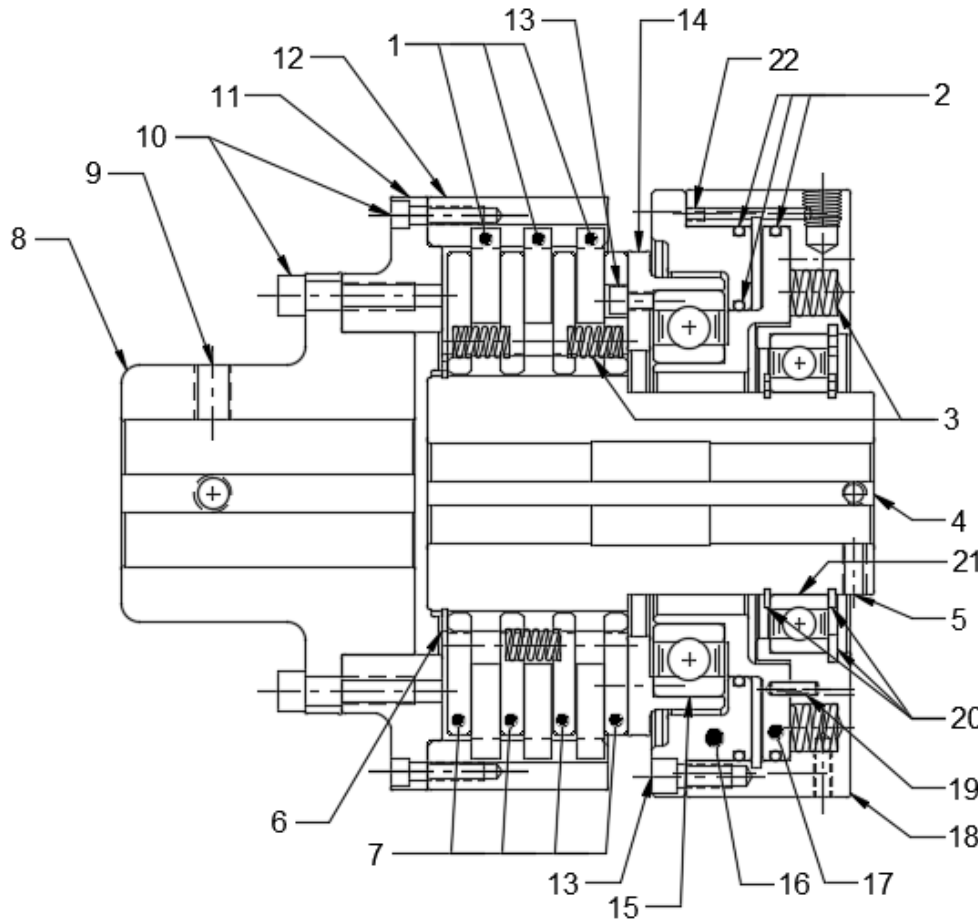
859-291-0849

engineering@machiii.com

www.machiii.com

L6G3K-001

Parts Diagram



REF#	DESCRIPTION & PARTS INCLUDED	QUANTITY	KIT NUMBER
	REPAIR KIT		L6G3K-001-RPRK
1	Friction Disc	3	
2	O-Ring	3	
3	Coil Spring	35	
	DRIVE HUB KIT		L6G3K-001-HUBK
4	Drive Hub	1	
5	Set Screw	2	
6	Retainer Ring	1	
	DRIVE DISC KIT		L6G3K-001-DRDK
7	Drive Disc	4	
	COUPLING KIT		L3G3K-001-CPLK
8	Coupling	1	
9	Set Screw	2	
10	Screw	13	
11	Adapter	1	
12	Ring Gear	1	
	PISTON KIT		E6A2K-STH-PSTK
13	Screw	4	
14	Cone	1	
15	Bearing	1	
16	Top Plate	1	
17	Piston	1	
	CYLINDER KIT		E6A2K-STH-CYLK
18	Cylinder	1	
19	Pin	2	
20	Retainer Ring	3	
21	Bearing	1	
22	Set Screw	1	

PARTS KITS

The *Repair Kit* contains common wear items for this product. Users are encouraged to stock one or more repair kits considering the number of units installed and the potential downtime if machinery on which the unit is installed is critical equipment. To obtain current pricing and lead time for parts kits, contact customer service.

orders@machiii.com

ADDITIONAL PRODUCT INFORMATION

Click on the links below or copy and paste into your web browser.

To view the Installation & Maintenance Manual for this product:

[http://machiii.com/PDF/Product-Manuals/CLUTCH MECH W COUPL AIR HD MANUAL.pdf](http://machiii.com/PDF/Product-Manuals/CLUTCH_MECH_W_COUPL_AIR_HD_MANUAL.pdf)

For information about the application and use of this and other Mach III products:

<http://machiii.com/Application/Default.asp>



859-291-0849

engineering@machiii.com

www.machiii.com