



E6H2K-001

Flexible Clutch Coupling

Engagement/Disengagement

Spring/Air

Facing Type

High Coefficient

Torque @ 0 PSI – Dynamic

4,723 Pound Inches

Minimum Disengagement Pressure

78 PSI

Maximum Operating Pressure

90 PSI

Maximum RPM

1,650

Bore with Standard Keyway

1.375 Inches

Air Volume/Cycle

3.37 Cubic Inches

Finish

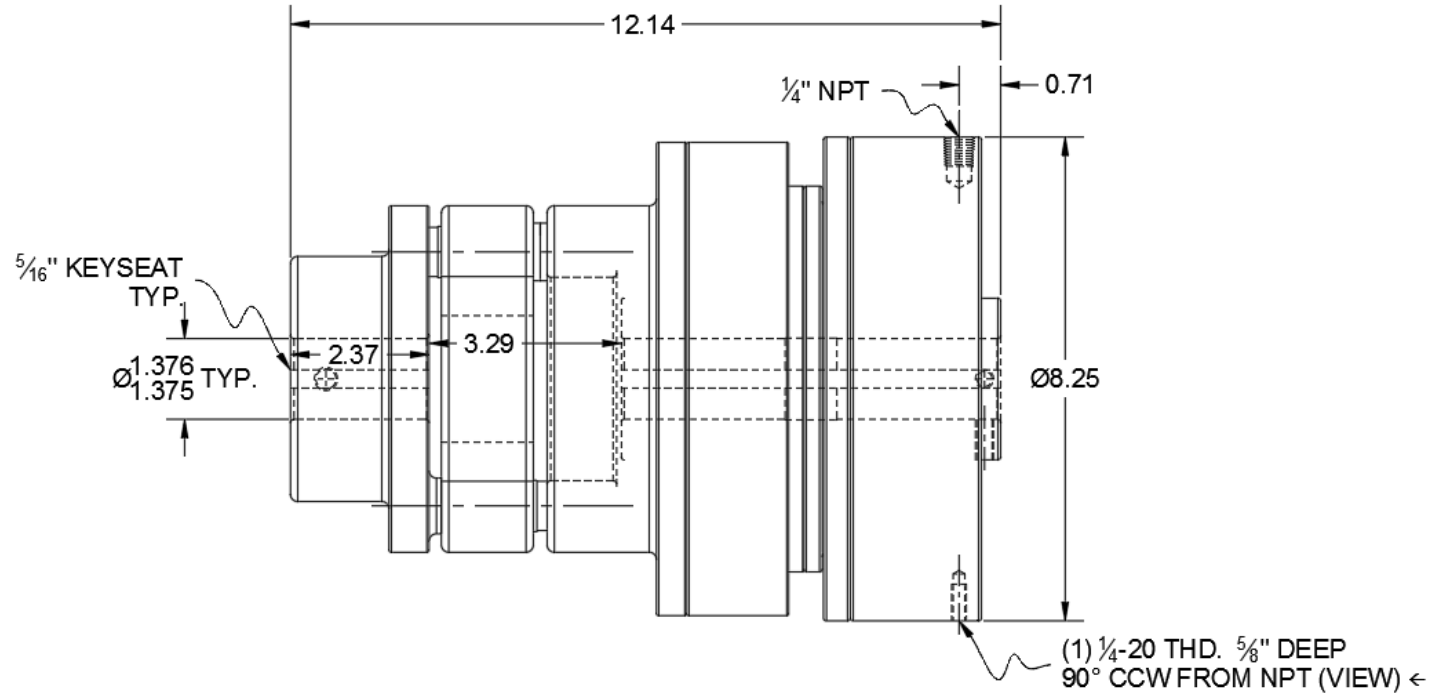
Aluminum

Open or Enclosed Construction

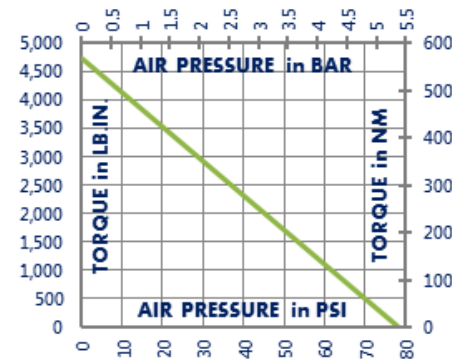
Open

Shipping Weight

46 Pounds



TORQUE vs. SPRING PRESSURE



NEW vs. BURNISHED TORQUE

New clutch or brake torque is approximately 40% less than rated design torque until the friction and drive discs are worn in (lapped, burnished). The length of time for wear-in to occur varies by application.

When calculating required torque always use a service factor of 1.5 to 2. It is not recommended to select a product for use at its maximum rated torque for continuous duty.

PRODUCT SELECTION

Torque capacity is only one factor to consider when making a product selection. Insure that you will have right product for the job by contacting our engineering department for application review and selection assistance.



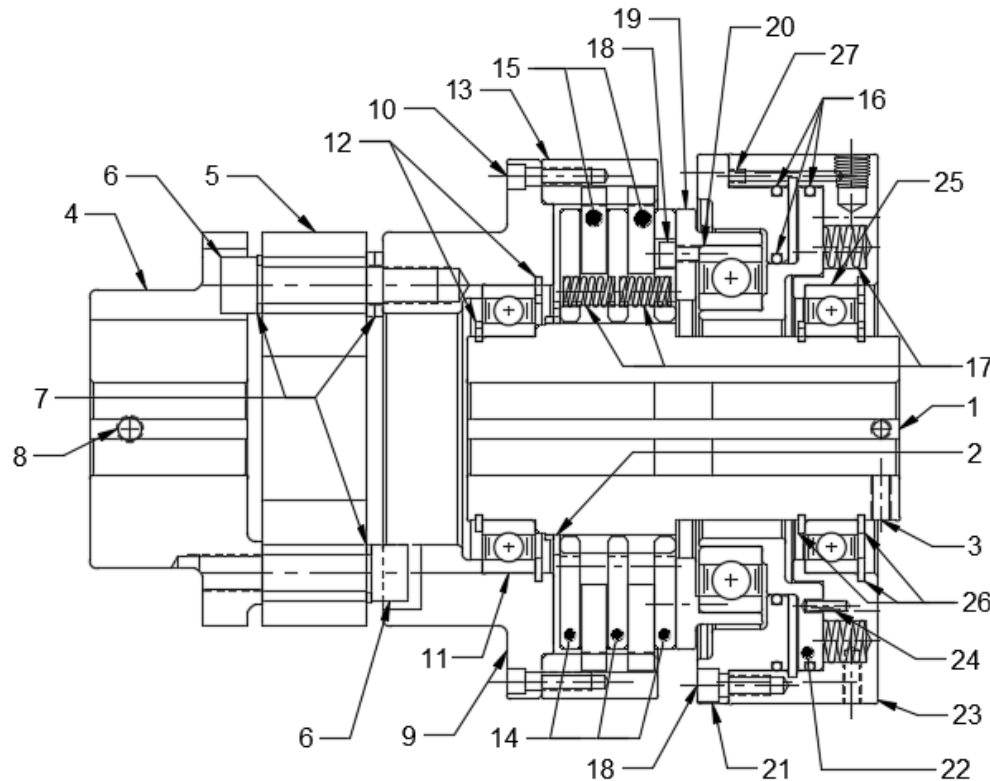
859-291-0849

engineering@machiii.com

www.machiii.com

E6H2K-001

Parts Diagram



REF#	DESCRIPTION & PARTS INCLUDED	QUANTITY	KIT NUMBER
DRIVE HUB KIT			E6H2K-001-HUBK
1	Drive Hub	1	
2	Retainer Ring	1	
3	Set Screw	2	
SLEEVE KIT			E6H2K-001-SLVK
4	Coupling	1	
5	Elastomeric Element	1	
6	Screw	6	
7	Washer	12	
8	Set Screw	1	
9	Sleeve	1	
10	Screw	7	
11	Bearing	1	
12	Retainer Ring	2	
13	Ring Gear	1	
DRIVE DISC KIT			C6A2K-STH-DRDK
14	Drive Disc	3	
REPAIR KIT			E6H2K-001-RPRK
15	Friction Disc	2	
16	O-Ring	3	
17	Coil Spring	32	
PISTON KIT			E6A2K-STH-PSTK
18	Screw	4	
19	Cone	1	
20	Bearing	1	
21	Top Plate	1	
22	Piston	1	
CYLINDER KIT			E6A2K-STH-CYLK
23	Cylinder	1	
24	Pin	2	
25	Bearing	1	
26	Retainer Ring	3	
27	Set Screw	1	

PARTS KITS

The *Repair Kit* contains common wear items for this product. Users are encouraged to stock one or more repair kits considering the number of units installed and the potential downtime if machinery on which the unit is installed is critical equipment. To obtain current pricing and lead time for parts kits, contact customer service.

orders@machiii.com

ADDITIONAL PRODUCT INFORMATION

Click on the links below or copy and paste into your web browser.

To view the Installation & Maintenance Manual for this product:

http://www.machiii.com/PDF/product-manuals/CLUTCH_THRUSHAFT_BALLBRG_SPRING_HD_MANUAL.pdf

For information about the application and use of this and other Mach III products:

<http://machiii.com/Application/Default.asp>



859-291-0849

engineering@machiii.com

www.machiii.com