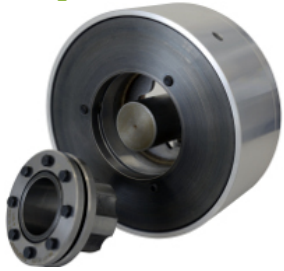


# Spring Applied Brake

## Flange Mount



### D5F2R-002

#### Engagement/Disengagement

Spring/Air

#### Facing Type

High Coefficient

#### Torque – Dynamic

1,200 Pound Inches

#### Minimum Disengagement Pressure

55 PSI

#### Maximum Operating Pressure

80 PSI

#### Maximum RPM

1,750

#### Bore Size

1.688 Inches

#### Air Volume New

0.53 Cubic Inches

#### Air Volume Worn

0.96 Cubic Inches

#### Finish

Aluminum

#### Open or Enclosed Construction

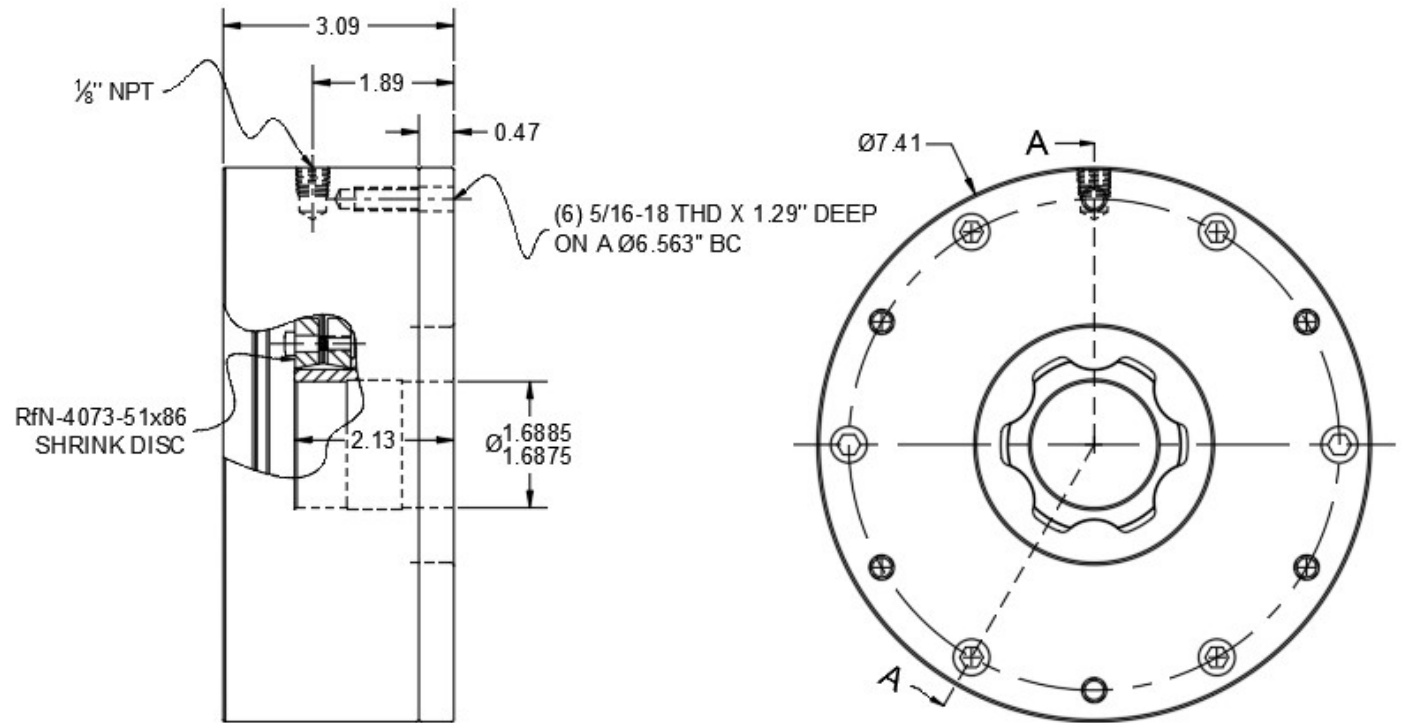
Open

#### Mounting Bolt Circle

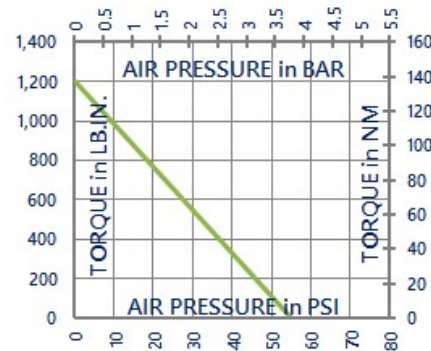
6.563 Inches

#### Shipping Weight

16 Pounds



#### TORQUE vs. AIR PRESSURE



#### NEW vs. BURNISHED TORQUE

New clutch or brake torque is approximately 40% less than rated design torque until the friction and drive discs are worn in (lapped, burnished). The length of time for wear-in to occur varies by application.

When calculating required torque always use a service factor of 1.5 to 2. It is not recommended to select a product for use at its maximum rated torque for continuous duty.

#### PRODUCT SELECTION

Torque capacity is only one factor to consider when making a product selection. Insure that you will have right product for the job by contacting our engineering department for application review and selection assistance.



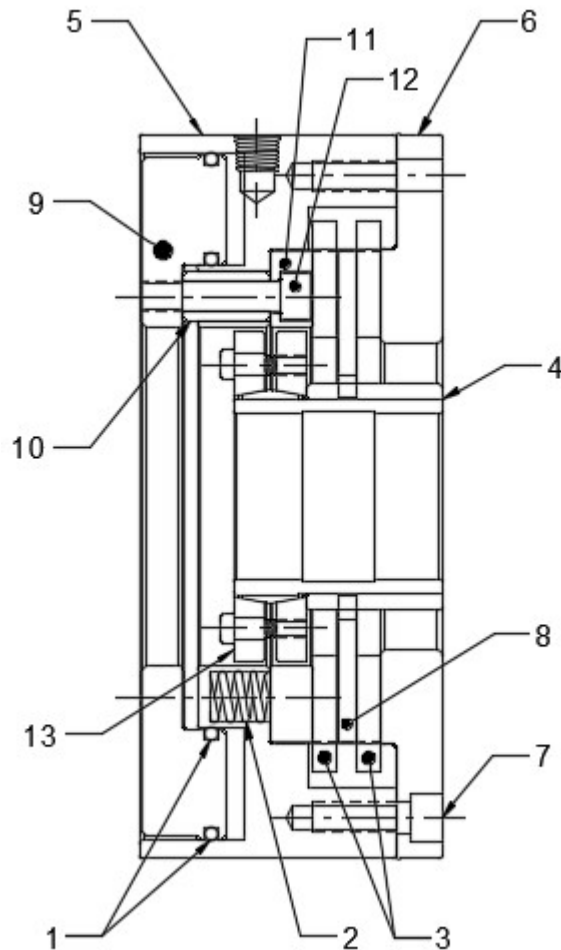
859-291-0849

[engineering@machiii.com](mailto:engineering@machiii.com)

[www.machiii.com](http://www.machiii.com)

# D5F2R-002

## Parts Diagram



REF#	DESCRIPTION & PARTS INCLUDED	QUANTITY	KIT NUMBER
	<b>REPAIR KIT</b>		<b>D5F2R-002-RPRK</b>
1	"O" Ring	2	
2	Coil Spring	18	
3	Friction Disc	2	
4	DRIVE HUB	1	D5F2R-002-P001
	<b>CYLINDER KIT</b>		<b>D5F2R-002-CYLK</b>
5	Cylinder	1	
6	Top Plate	1	
7	Screw	6	
8	DRIVE DISC	1	D5F2R-002-P005
	<b>PISTON KIT</b>		<b>D5F2R-002-PSTK</b>
9	Piston	1	
10	Spacer	3	
11	Pressure Plate	1	
12	Screw	3	
13	SHRINK DISC	1	D5F2R-002-P062

### PARTS KITS

The *Repair Kit* contains common wear items for this product. Users are encouraged to stock one or more repair kits considering the number of units installed and the potential downtime if machinery on which the unit is installed is critical equipment. To obtain current pricing and lead time for parts kits, contact customer service.

[orders@machiii.com](mailto:orders@machiii.com)

### ADDITIONAL PRODUCT INFORMATION

Click on the links below or copy and paste into your web browser.

To view the Installation & Maintenance Manual for this product:

[http://machiii.com/PDF/Product-Manuals/BRAKES\\_FLANGE\\_SPRING\\_MANUAL.pdf](http://machiii.com/PDF/Product-Manuals/BRAKES_FLANGE_SPRING_MANUAL.pdf)

For information about the application and use of this and other Mach III products:

<http://machiii.com/Application/Default.asp>



859-291-0849

[engineering@machiii.com](mailto:engineering@machiii.com)

[www.machiii.com](http://www.machiii.com)