

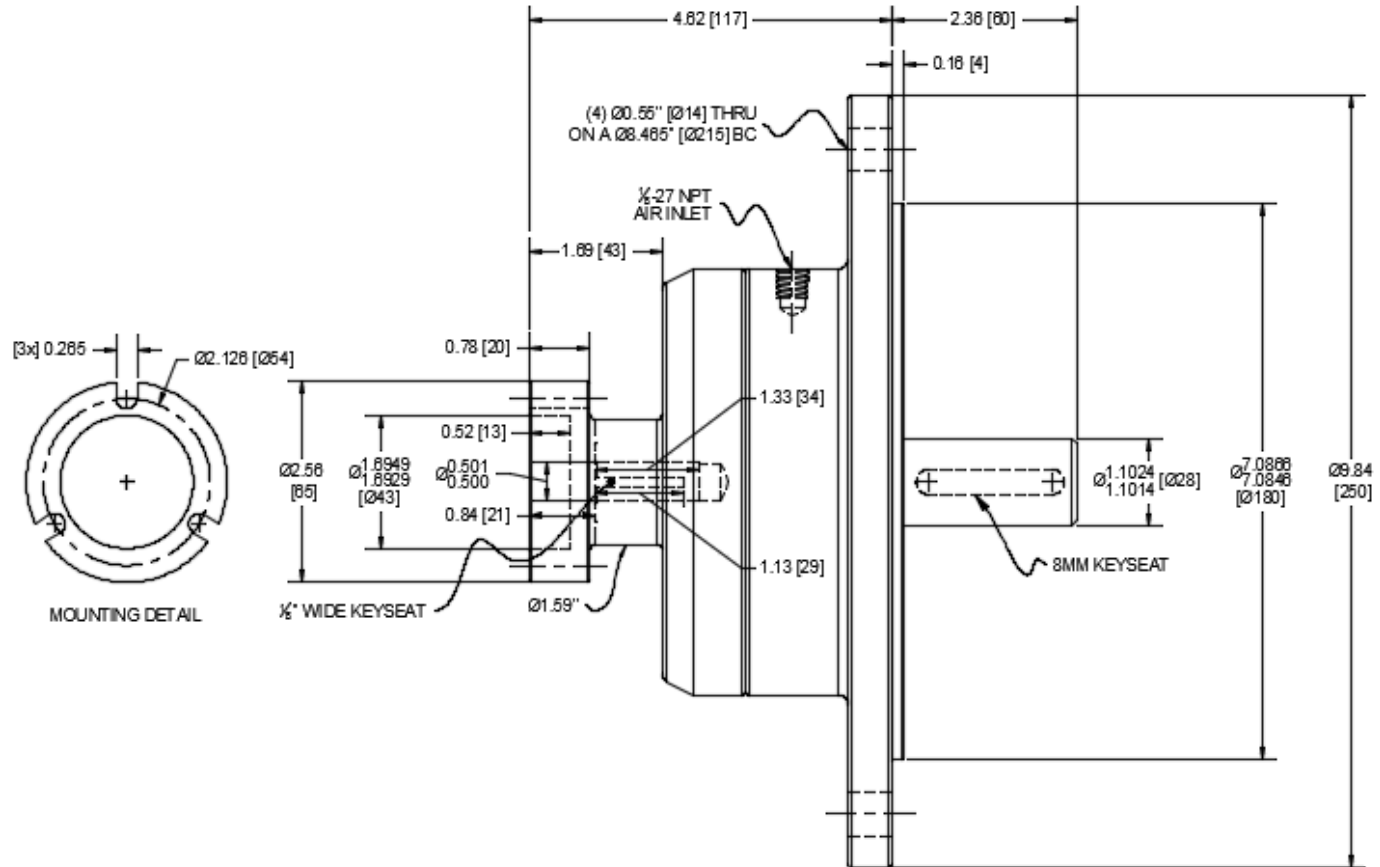
Friction Brake – Motor Frame C-face Mount



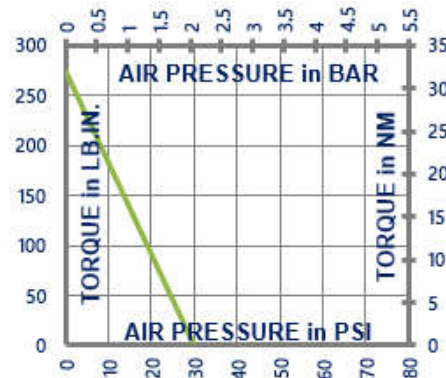
D4C2R-001

NOT suitable for pulley output

Engagement/Disengagement	Spring/Air
Facing Type	High Coefficient
Torque – Dynamic	274 Pound Inches
Minimum Disengagement Pressure	30 PSI
Maximum Operating Pressure	80 PSI
Maximum RPM	1,750
Input Bore/Output Shaft	0.500 Inches / 28 Millimeter
Air Volume New	1.51 Cubic Inches
Air Volume Worn	1.83 Cubic Inches
Finish	Aluminum
Open or Enclosed Construction	Enclosed
Shipping Weight	7 Pounds



TORQUE vs. AIR PRESSURE



NEW vs. BURNISHED TORQUE

New clutch or brake torque is approximately 40% less than rated design torque until the friction and drive discs are worn in (lapped, burnished). The length of time for wear-in to occur varies by application.

When calculating required torque always use a service factor of 1.5 to 2. It is not recommended to select a product for use at its maximum rated torque for continuous duty.

PRODUCT SELECTION

Torque capacity is only one factor to consider when making a product selection. Insure that you will have right product for the job by contacting our engineering department for application review and selection assistance.



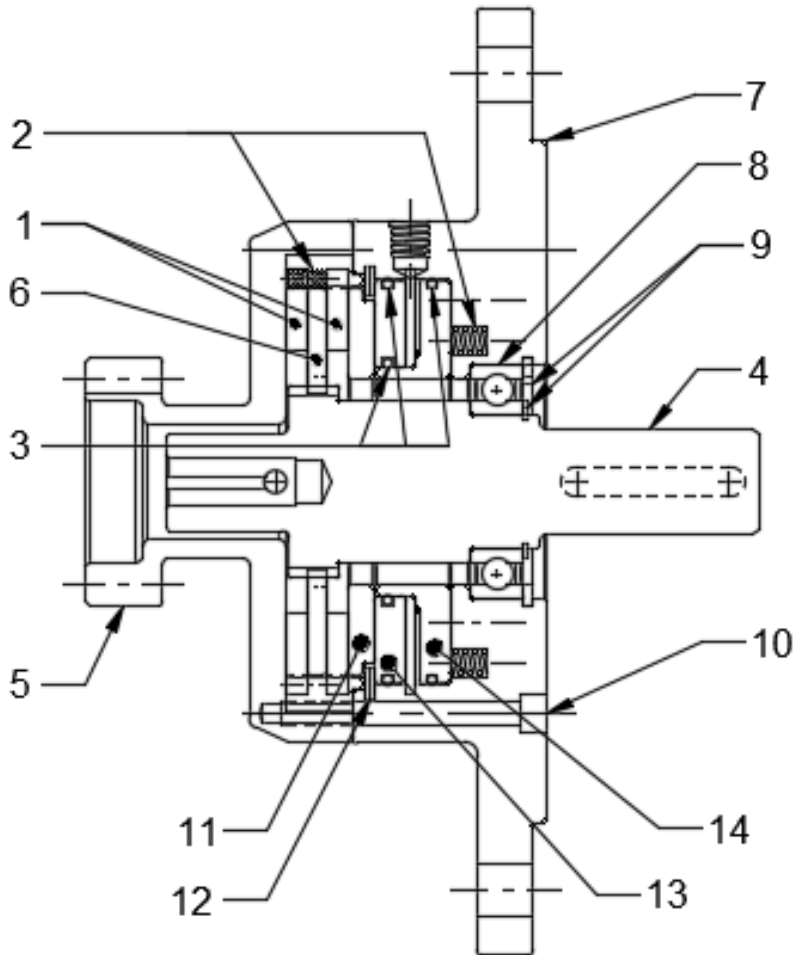
859-291-0849

engineering@machiii.com

www.machiii.com

D4C2R-001

Parts Diagram



REF#	DESCRIPTION & PARTS INCLUDED	QUANTITY	KIT NUMBER
	REPAIR KIT		D4C2R-001-RPRK
1	Friction Disc	2	
2	Coil Spring	29	
3	O-Ring	3	
4	DRIVE HUB	1	D4C2R-001-P001
5	SLEEVE	1	D4C2R-001-P002
6	DRIVE DISC	1	D4C2R-001-P005
	CYLINDER KIT		D4C2R-001-CYLK
7	Cylinder	1	
8	Bearing	1	
9	Retainer Ring	2	
10	Screw	6	
	PISTON KIT		D4C2R-001-PSTK
11	Spacer	1	
12	Retainer Ring	1	
13	Piston	1	
14	Spring Retainer	1	

PARTS KITS

The *Repair Kit* contains common wear items for this product. Users are encouraged to stock one or more repair kits considering the number of units installed and the potential downtime if machinery on which the unit is installed is critical equipment. To obtain current pricing and lead time for parts kits, contact customer service.

orders@machiii.com

ADDITIONAL PRODUCT INFORMATION

Click on the links below or copy and paste into your web browser.

To view the Installation & Maintenance Manual for this product:
<http://machiii.com/PDF/Product-Manuals/BRAKES NEMA SPRING MANUAL.pdf>

For information about the application and use of this and other Mach III products:
<http://machiii.com/Application/Default.asp>



859-291-0849

engineering@machiii.com

www.machiii.com