



D3C2R-005

Spring Engaged Air or Manual Release Brake

Engagement/Disengagement

Spring/Air-Lever

Facing Type

High Coefficient

Torque – Dynamic

461 Pound Inches

Minimum Disengagement Pressure

65 PSI

Maximum Operating Pressure

90 PSI

Maximum RPM

1,750

Bore Size with Standard Keyway

19mm [0.748"]

Mounting Bolt Circle

164mm [6.457"]

Air Volume / Cycle

0.36 Cubic Inches

Finish

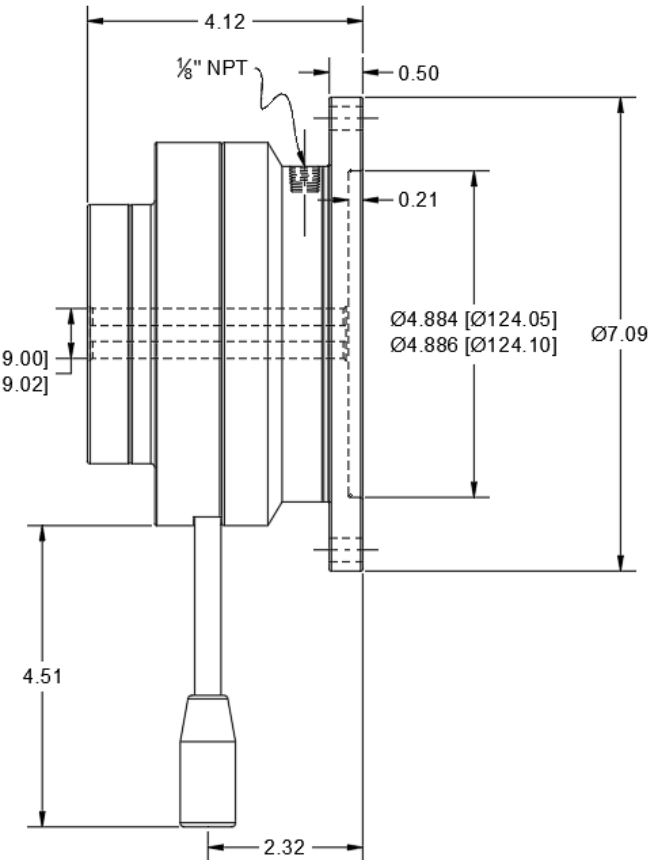
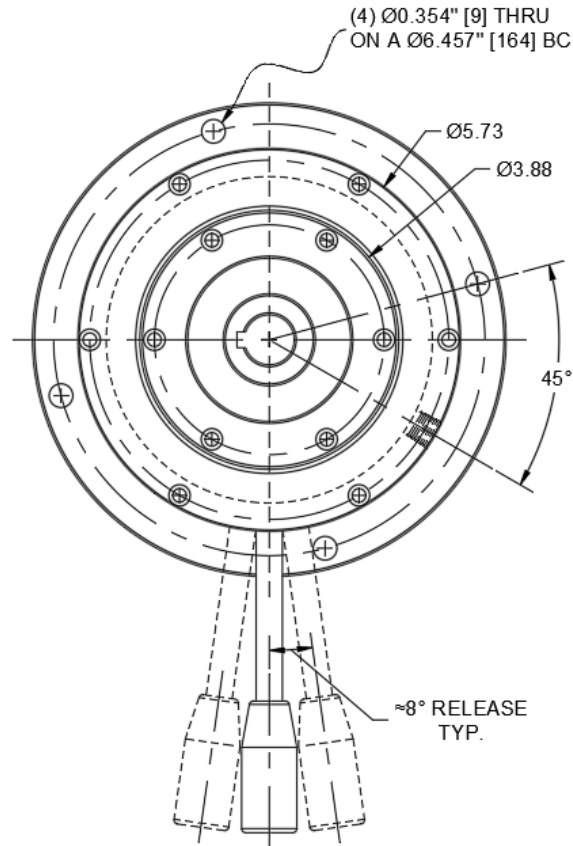
Aluminum

Open or Enclosed Construction

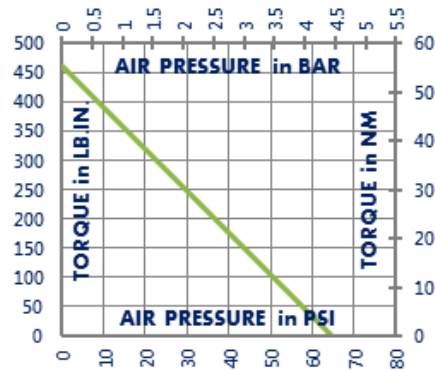
Open

Shipping Weight

12 Pounds



TORQUE vs. SPRING PRESSURE



NEW vs. BURNISHED TORQUE

New clutch or brake torque is approximately 40% less than rated design torque until the friction and drive discs are worn in (lapped, burnished). The length of time for wear-in to occur varies by application.

When calculating required torque always use a service factor of 1.5 to 2. It is not recommended to select a product for use at its maximum rated torque for continuous duty.

PRODUCT SELECTION

Torque capacity is only one factor to consider when making a product selection. Insure that you will have right product for the job by contacting our engineering department for application review and selection assistance.



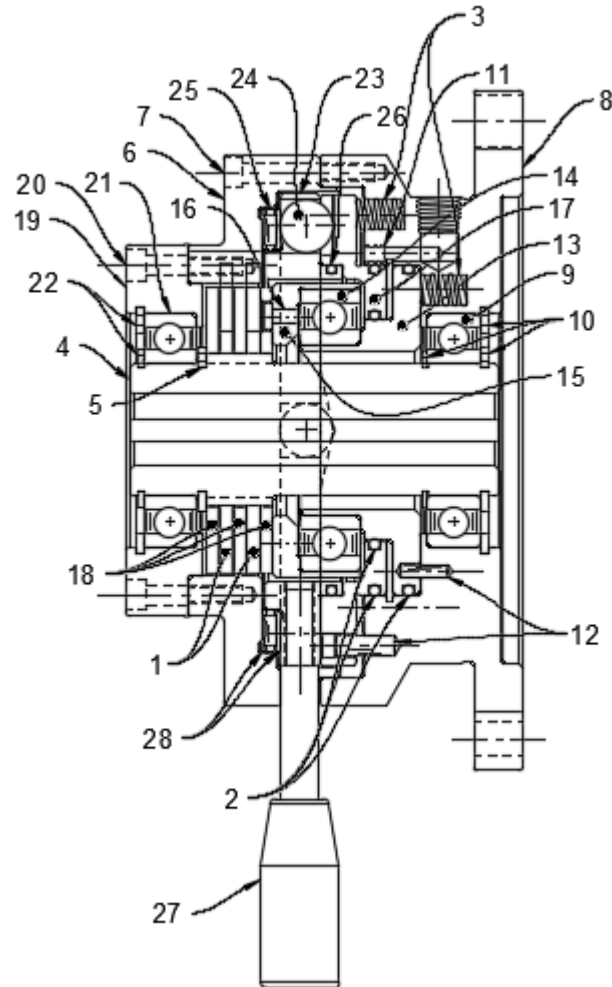
859-291-0849

engineering@machiii.com

www.machiii.com

D3C2R-005

Parts Diagram



REF#	DESCRIPTION & PARTS INCLUDED	QUANTITY	KIT NUMBER
	REPAIR KIT		D3C2R-005-RPRK
1	Friction Disc	2	
2	O-Ring	3	
3	Spring	20	
	DRIVE HUB KIT		D3C2R-003-HUBK
4	Drive Hub	1	
5	Retainer Ring	1	
	SLEEVE KIT		D3C2R-005-SLVK
6	Sleeve	1	
7	Screw	6	
	CYLINDER KIT		D3C2R-003-CYLK
8	Cylinder	1	
9	Bearing	1	
10	Retainer Ring	3	
11	Screw	1	
12	Pin	4	
	PISTON KIT		D3C2R-003-PSTK
13	Piston	1	
14	Bearing	1	
15	Cone	1	
16	Screw	1	
17	Pressure Plate	1	
	DRIVE DISC KIT		D3C2R-003-DRDK
18	Drive Disc	3	
	COVER KIT		D3C2R-005-COVK
19	Cover	1	
20	Screw	6	
21	Bearing	1	
22	Retainer Ring	2	
	CAGE KIT		D3C2R-003-CAGK
23	Cage	1	
24	Ball	4	
25	Thrust Bearing	1	
26	O-Ring	1	
27	Handle	1	
28	Race	2	

PARTS KITS

The *Repair Kit* contains common wear items for this product. Users are encouraged to stock one or more repair kits considering the number of units installed and the potential downtime if machinery on which the unit is installed is critical equipment. To obtain current pricing and lead time for parts kits, contact customer service.

orders@machiii.com

ADDITIONAL PRODUCT INFORMATION

Click on the links below or copy and paste into your web browser.

For information about the application and use of this and other Mach III products:

<http://machiii.com/Application/Default.asp>



859-291-0849

engineering@machiii.com

www.machiii.com