

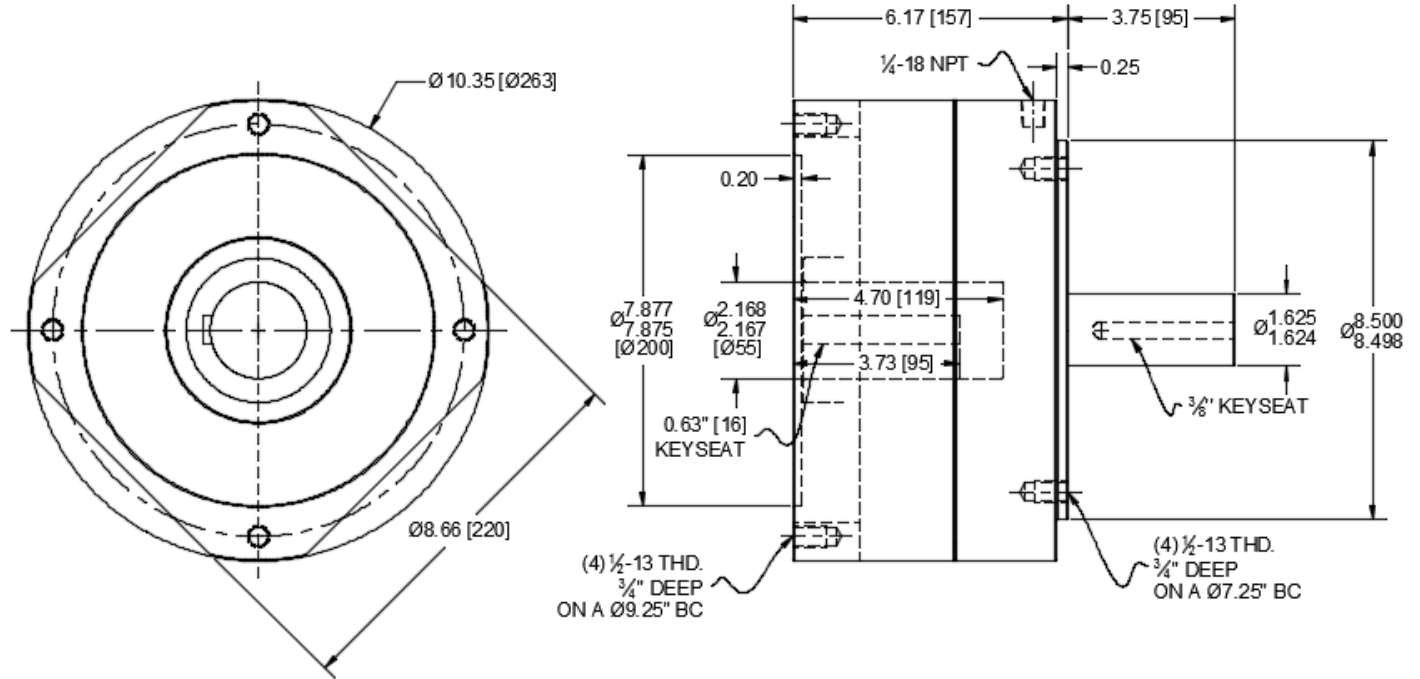


6737

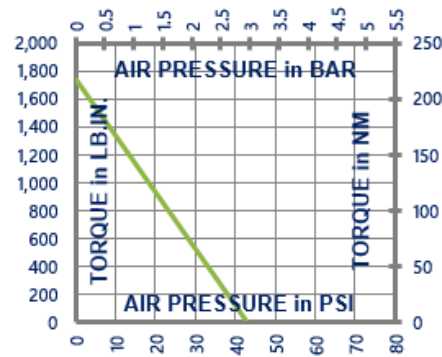
Custom Servo Motor Brake

NOT suitable for pulley output

Engagement/Disengagement	Spring/Air
Facing Type	High Coefficient
Torque – Dynamic	1,734 Pound Inches
Minimum Disengagement Pressure	43 PSI
Maximum Operating Pressure	90 PSI
Maximum RPM	1,650
Input Bore/Output Shaft	55mm [2.165 Inches] / 1.625 Inches
Air Volume New	0.71 Cubic Inches
Air Volume Worn	5.93 Cubic Inches
Finish	Aluminum
Open or Enclosed Construction	Enclosed
Shipping Weight	56 Pounds



TORQUE vs. SPRING PRESSURE



NEW vs. BURNISHED TORQUE

New clutch or brake torque is approximately 40% less than rated design torque until the friction and drive discs are worn in (lapped, burnished). The length of time for wear-in to occur varies by application.

When calculating required torque always use a service factor of 1.5 to 2. It is not recommended to select a product for use at its maximum rated torque for continuous duty.

PRODUCT SELECTION

Torque capacity is only one factor to consider when making a product selection. Insure that you will have right product for the job by contacting our engineering department for application review and selection assistance.



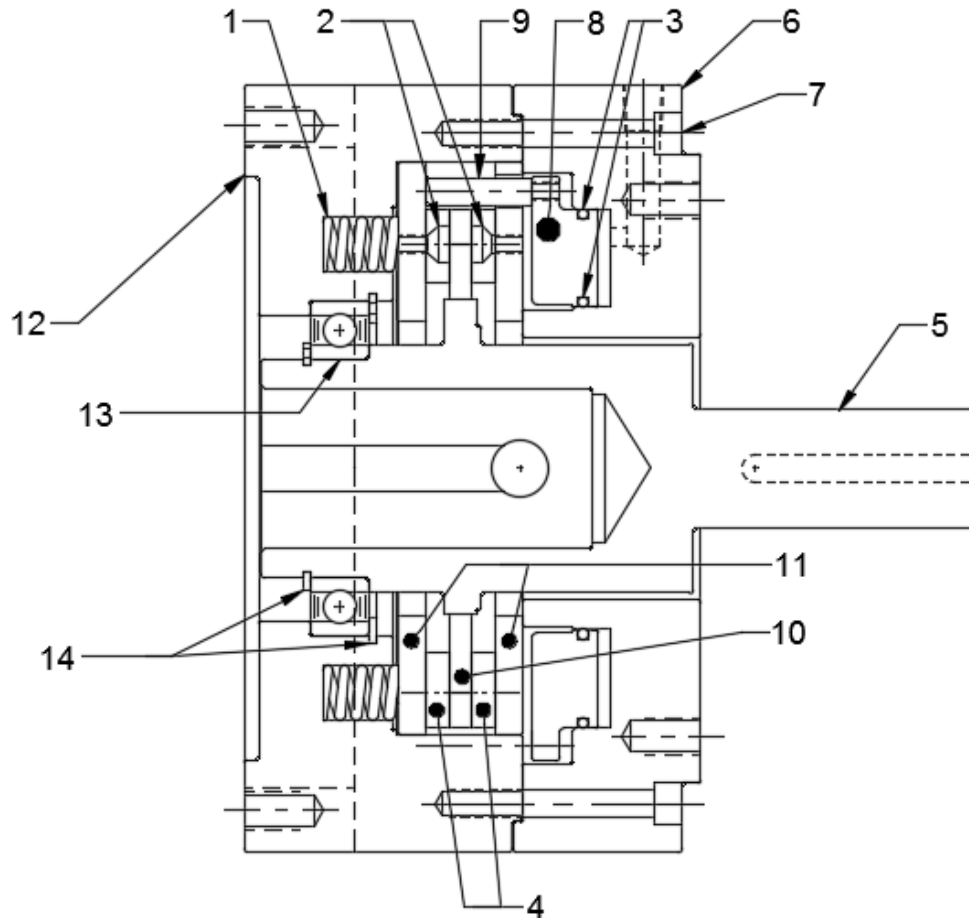
859-291-0849

engineering@machiii.com

www.machiii.com

6737

Parts Diagram



REF#	DESCRIPTION & PARTS INCLUDED	QUANTITY	KIT NUMBER
	REPAIR KIT		6737-RPRK
1	Coil Spring	6	
2	Screw	12	
3	O-Ring	2	
4	Friction Disc	2	
	DRIVE HUB KIT		6737-HUBK
5	Drive Hub	1	
	CYLINDER KIT		6737-CYLK
6	Cylinder	1	
7	Screw	6	
	PISTON KIT		6737-PSTK
8	Piston	1	
9	Stud	3	
	DRIVE DISC KIT		6737-DRDK
10	Drive Disc	1	
11	Drive Plate	2	
	ADAPTER KIT		6737-ADPK
12	Adapter	1	
13	Bearing	1	
14	Retainer Ring	2	

PARTS KITS

The *Repair Kit* contains common wear items for this product. Users are encouraged to stock one or more repair kits considering the number of units installed and the potential downtime if machinery on which the unit is installed is critical equipment. To obtain current pricing and lead time for parts kits, contact customer service.

orders@machiii.com

ADDITIONAL PRODUCT INFORMATION

Click on the links below or copy and paste into your web browser.

To view the Installation & Maintenance Manual for this product:
<http://www.machiii.com/PDF/Product-Manuals/BRAKES NEMA SPRING MANUAL.pdf>

For information about the application and use of this and other Mach III products:
<http://machiii.com/Application/Default.asp>



859-291-0849

engineering@machiii.com

www.machiii.com