



3155

Face Mount Combination Clutch-Brake Stop & Start the Shaft

Clutch Engagement/Brake Engagement

Air/Air

Facing Type

High Coefficient

Clutch Torque @ 80 PSI – Dynamic

286 Pound Inches

Brake Torque @ 80 PSI – Dynamic

143 Pound Inches

Maximum RPM

1,750

Bore with Standard Keyway

0.625 Inches

Air Volume New (Clutch & Brake)

0.19 Cubic Inches

Air Volume Worn (Clutch & Brake)

0.69 Cubic Inches

Finish

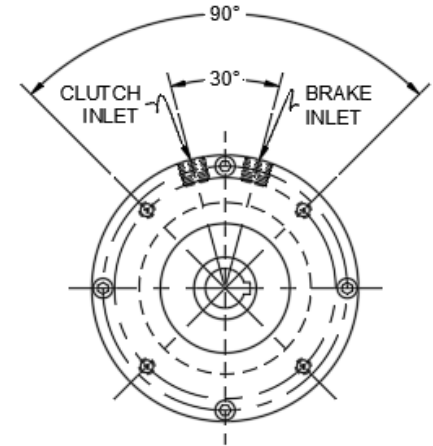
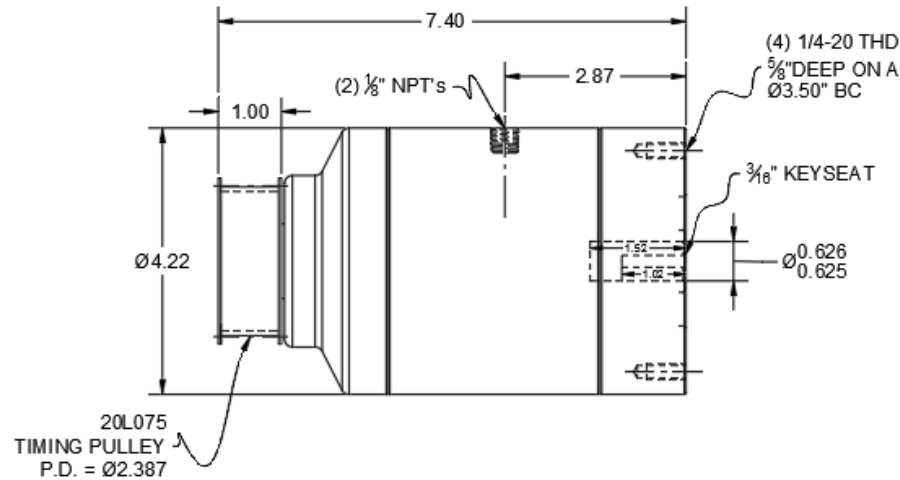
Anodized Aluminum

Open or Enclosed Construction

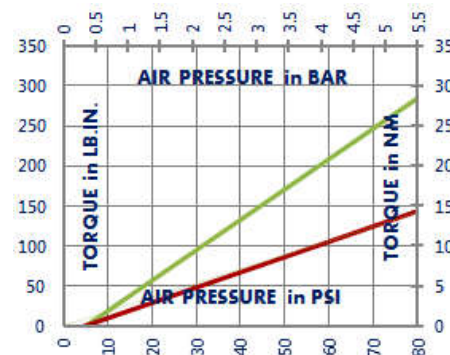
Enclosed

Shipping Weight

8 Pounds



TORQUE vs. AIR PRESSURE



NEW vs. BURNISHED TORQUE

New clutch or brake torque is approximately 40% less than rated design torque until the friction and drive discs are worn in (lapped, burnished). The length of time for wear-in to occur varies by application.

When calculating required torque always use a service factor of 1.5 to 2. It is not recommended to select a product for use at its maximum rated torque for continuous duty.

PRODUCT SELECTION

Torque capacity is only one factor to consider when making a product selection. Insure that you will have right product for the job by contacting our engineering department for application review and selection assistance.



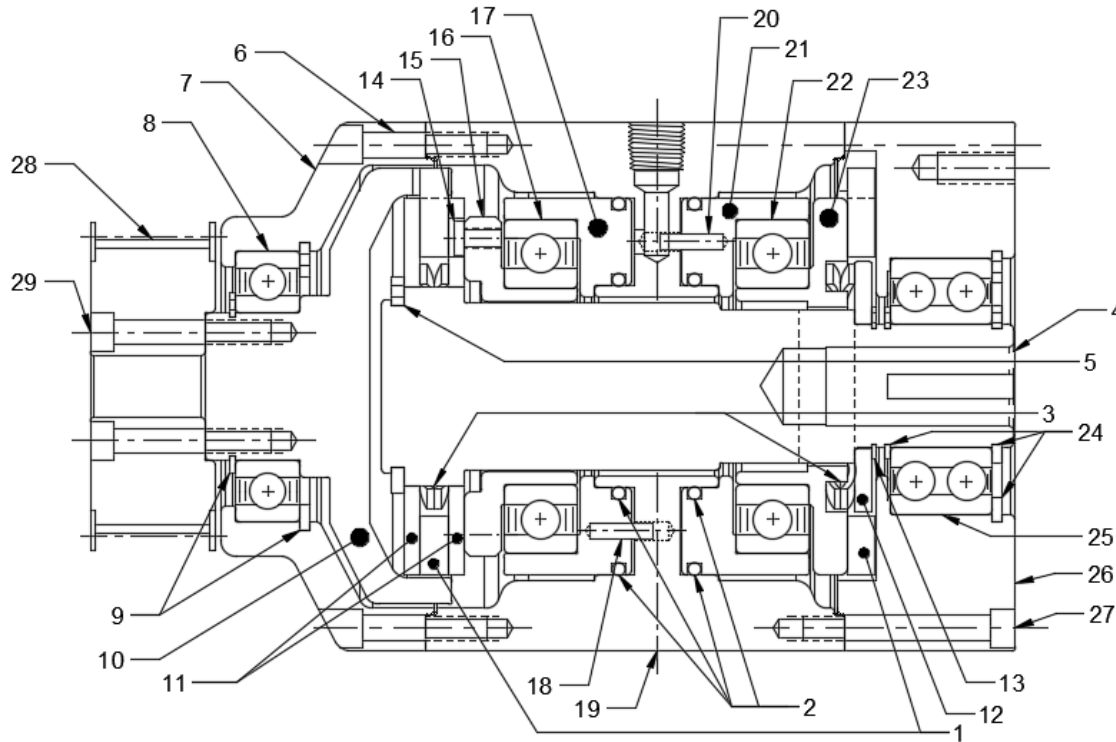
859-291-0849

engineering@machiii.com

www.machiii.com

3155

Parts Diagram



REF#	DESCRIPTION & PARTS INCLUDED	QUANTITY	KIT NUMBER
	REPAIR KIT		3155-RPRK
1	Friction Disc	2	
2	O-Ring	4	
3	Wave Spring	2	
	DRIVE HUB KIT		3155-HUBK
4	Drive Hub	1	
5	Retainer Ring	1	
	SLEEVE KIT		3155-SLVK
6	Screw	4	
7	Adapter	1	
8	Bearing	1	
9	Retainer Ring	2	
10	Sleeve	1	
	DRIVE DISC KIT		3155-DRDK
11	Drive Disc	2	
12	Spring Retainer	1	
13	Retainer Ring	1	
	PISTON KIT - CLUTCH		3155-PSCK
14	Screw	1	
15	Cone	1	
16	Bearing	1	
17	Piston	1	
18	Pin	2	
19	CYLINDER	1	3155-P003
	PISTON KIT - BRAKE		3155-PSBK
20	Pin	2	
21	Piston	1	
22	Bearing	1	
23	Brake Drive Disc	1	
	ADAPTER KIT		3155-ADPK
24	Retainer Ring	3	
25	Bearing	1	
26	Brake Adapter	1	
27	Screw	4	
	PULLEY KIT		3155-PULK
28	Pulley	1	
29	Screw	6	

PARTS KITS

The *Repair Kit* contains common wear items for this product. Users are encouraged to stock one or more repair kits considering the number of units installed and the potential downtime if machinery on which the unit is installed is critical equipment. To obtain current pricing and lead time for parts kits, contact customer service.

orders@machiii.com

ADDITIONAL PRODUCT INFORMATION

Click on the links below or copy and paste into your web browser.

To view the Installation & Maintenance Manual for this product:

http://www.machiii.com/PDF/Product-Manuals/CLUTCHBR_AIR_SHAFT_BALLBRG_MANUAL.pdf

For information about the application and use of this and other Mach III products:

<http://machiii.com/Application/Default.asp>



859-291-0849

engineering@machiii.com

www.machiii.com