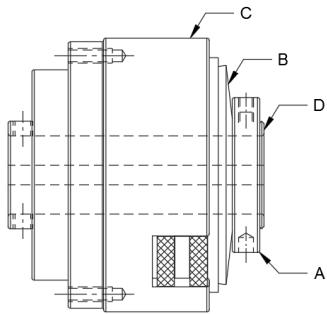


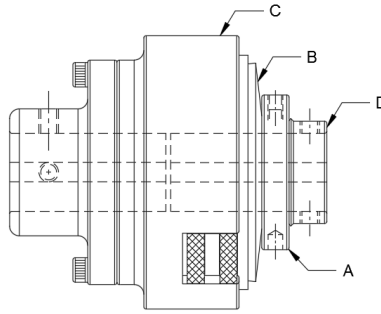


Torque Setting Instructions for Torque Limiters

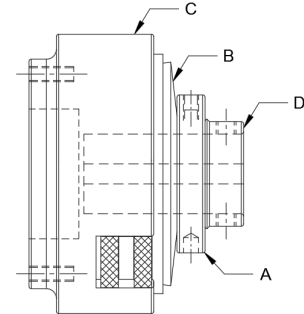
T3A2H-STL, T3B2H-STL, T3H2H-STL, T4A2H-STL, T4B2H-STL, T4H2H-STL,
T5A2H-STL, T5B2H-STL, T5H2H-STL, V3G2H-STL, V3R2H-STL, V4G2H-STL, V4R2H-STL,
V5G2H-STL, V5R2H-STL and non-catalog variations of these torque limiter designs.



PILOT MODELS



COUPLING MODELS



ADAPTER MODELS

1. Make sure the adjustment nut (REF. A) is snug against the disc spring (REF. B).
2. Tighten the adjustment nut (REF. A) one 1/4-turn and check torque value while holding adapter/sleeve (REF. C) stationary and turning drive hub (REF. D) with a torque wrench. After each turn check torque value and adjust until the required torque setting is reached.
3. Once desired torque is reached, tighten the nylon-tipped set screw in the outside diameter of the adjustment nut (REF. A).

Mach III Clutch, Inc.

859-291-0849 • engineeirng@machiii.com • www.machiii.com



These products include rotating equipment and should be guarded according to OSHA requirements and other Federal, State and local regulations. It is the responsibility of the user to provide the necessary guarding.