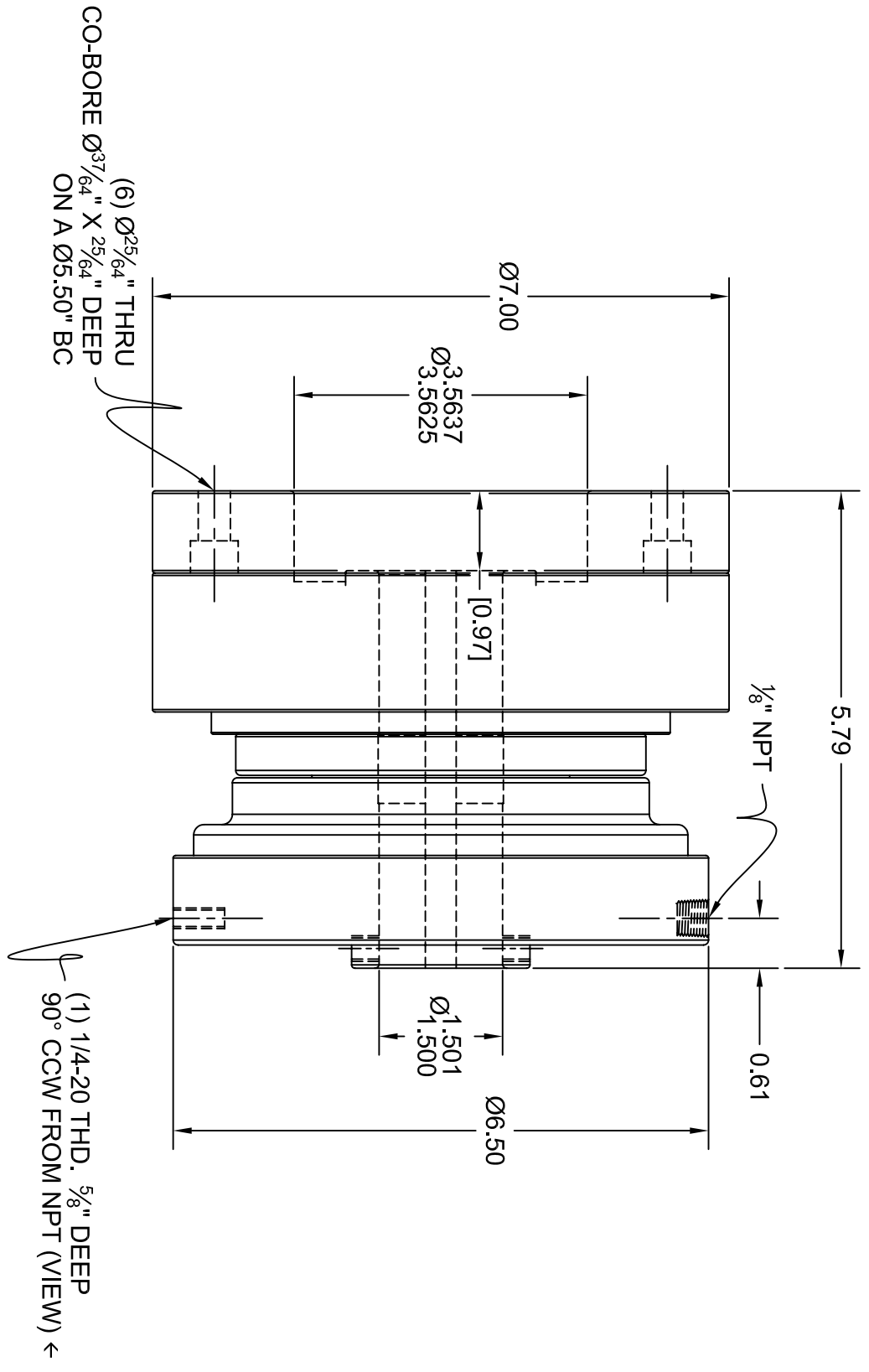


DESIGN TORQUE RATING:
 =~3320#" @ 80 PSI

New clutch or brake torque is approximately 40% less than rated design torque until the friction and drive discs are worn in (lapped, burrished). The length of time for wear in to occur depends upon the application.

WEIGHT
 23#



DRAWN BY:	REV	REVISION DESCRIPTION	DATE	PRODUCT #:	M5R2K-001 ASSEMBLY
R. Ashbrook				PRODUCT TYPE:	AIR SET CLUTCH MECHANISM
				DATE:	11/07/08
				CUSTOMER:	
				DISTRIBUTOR:	
				FORMER ID #:	



MACH III CLUTCH, INCORPORATED
 859-291-0849
 www.machiii.com