

T2G1R-001

Mechanical Friction Torque Limiter with Morse
Taper #1 Male Input and #2 Female Output



Designed for brief overloads.
Does not automatically disconnect.

Engagement/Disengagement

Spring/None

Facing Type

Low Coefficient

Minimum Torque Setting

6 Pound Inches

Maximum Torque Setting (Spring Compression ≈ 25%)

63 Pound Inches

Maximum RPM

150

Morse Taper Connections

#2 / #1

Finish

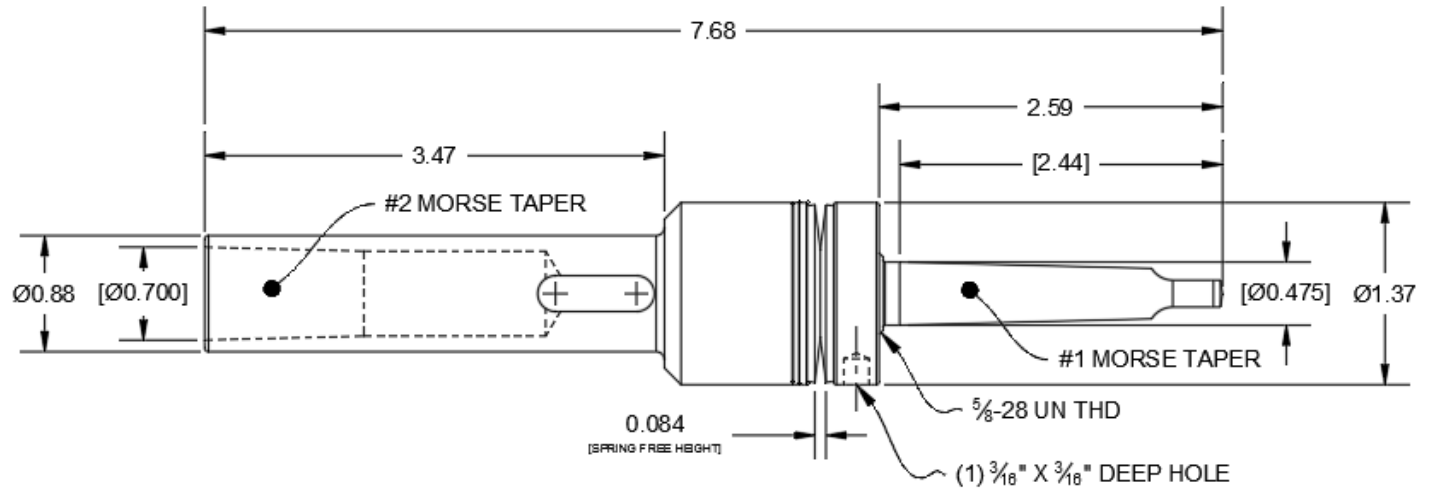
Steel

Open or Enclosed Construction

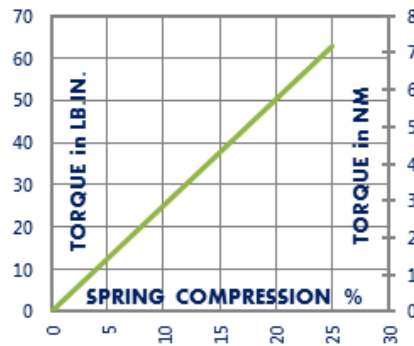
Open

Shipping Weight

1 Pounds



TORQUE vs. SPRING PRESSURE



NEW vs. BURNISHED TORQUE

The torque output setting of a friction torque limiter is set at the factory or in the field when new. (All torque settings are +/- 10%.) Repeated overload will burnish the friction surfaces and may increase the slip torque setting. The torque setting should be tested after prolonged or frequent overload and re-set if needed.

PRODUCT SELECTION

Torque capacity is only one factor to consider when making a product selection. Ensure that you will have the right product for the job by contacting our engineering department for application review and selection assistance.

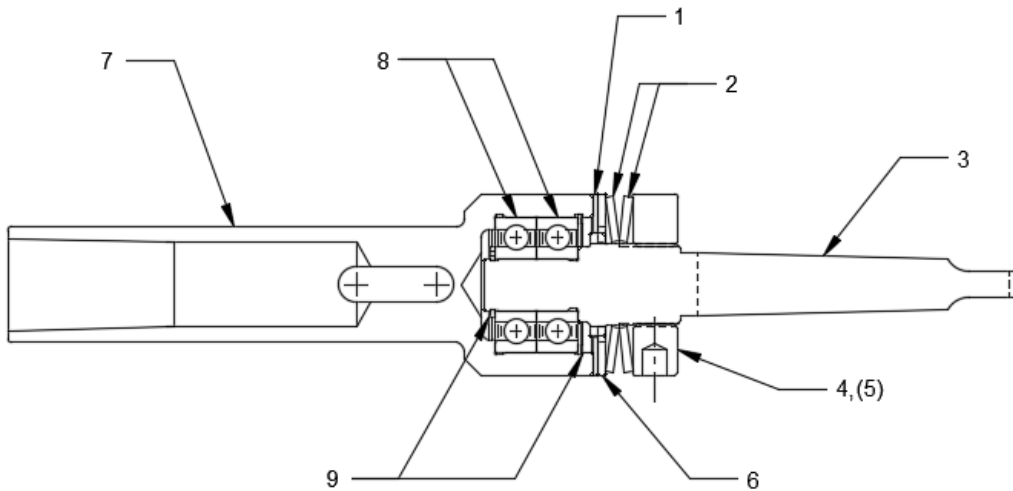


101 Cummings Drive
Walton, KY 41094 USA
859-291-0849
machiii.com

engineering@machiii.com

T2G1R-001

Parts Diagram



REF#	DESCRIPTION & PARTS INCLUDED	QUANTITY	KIT NUMBER
	REPAIR KIT		T2G1R-001-RPRK
1	Friction Disc	1	
2	Disc Spring	2	
5	Nylon Point Set Screw	1	
3	DRIVE HUB	1	T2G1R-001-P001
	NUT KIT		T2G1R-001-NUTK
4	Nut	1	
5	Nylon Point Set Screw	1	
6	DRIVE DISC	1	T2G1R-001-P005
	COUPLING KIT		T2G1R-001-CPLK
7	Coupling	1	
8	Bearing	2	
9	Retainer Ring	2	
	FACING KIT		T2G1R-001-FCGK
1	Friction Disc	1	
5	Nylon Point Set Screw	1	

PARTS KITS

The *Repair Kit* contains common wear items for this product. Users are encouraged to stock one or more repair kits considering the number of units installed and the potential downtime if machinery on which the unit is installed is critical equipment. To obtain current pricing and lead time for parts kits, contact customer service.

orders@machiii.com

ADDITIONAL PRODUCT INFORMATION

For illustrated guides showing how Mach III products work, selection guidelines, product manuals, and installation and use recommendations:

<https://machiii.com/resources/how-our-products-work>

For information about how to order, return policy and warranty information:

<https://machiii.com/resources/how-to-order>



859-291-0849

machiii.com

engineering@machiii.com