

# D8C2K-004

## Spring Engaged Friction Brake Motor Frame Mount



NOT suitable for pulley output

### Engagement/Disengagement

Spring/Air

### Facing Type

High Coefficient

### Torque – Dynamic

3,728 Pound Inches

### Minimum Disengagement Pressure

58 PSI

### Maximum Operating Pressure

90 PSI

### Maximum RPM

1,650

### Input Bore/Output Shaft

60mm/42mm

### Air Volume New

10.28 Cubic Inches.

### Air Volume Worn

11.38 Cubic Inches

### Finish

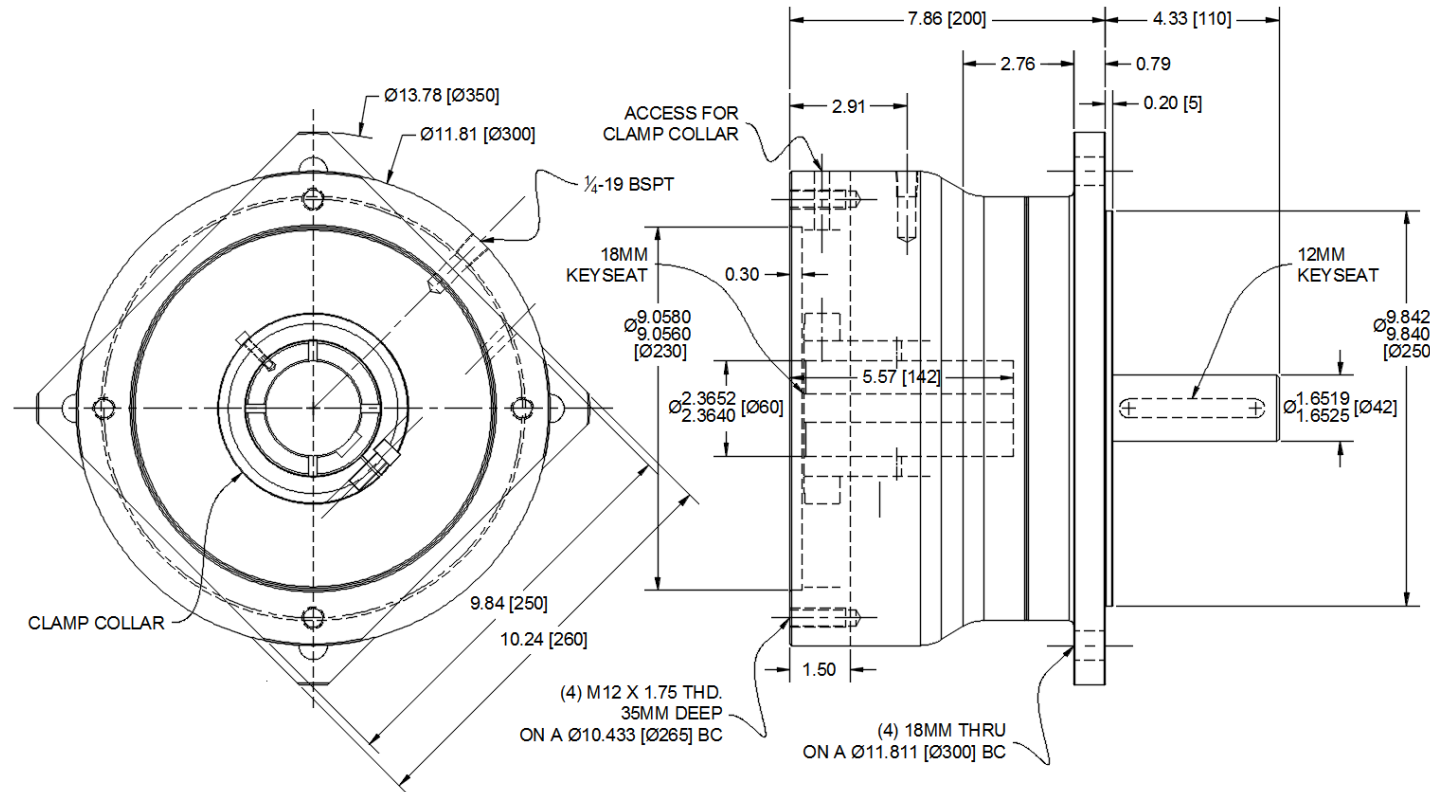
Aluminum

### Clear Anodized

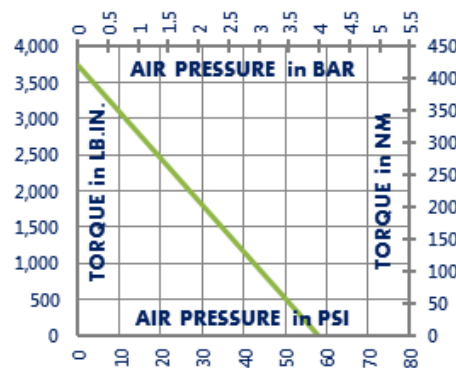
Enclosed

### Shipping Weight

75 Pounds



### TORQUE vs. AIR PRESSURE



### NEW vs. BURNISHED TORQUE

The torque output of a new friction brake or clutch can be up to 40% less than the published torque rating. To achieve full design torque, a unit must be cycled under load to burnish the friction surfaces. The exact number of cycles varies by application.

When calculating required torque always use a safety factor of 1.5 to 2. It is not recommended to select a product for use at its maximum rated torque for continuous duty.

### PRODUCT SELECTION

Torque capacity is only one factor to consider when making a product selection. Ensure that you will have the right product for the job by contacting our engineering department for application review and selection assistance.



101 Cummings Drive  
Walton, KY 41094 USA

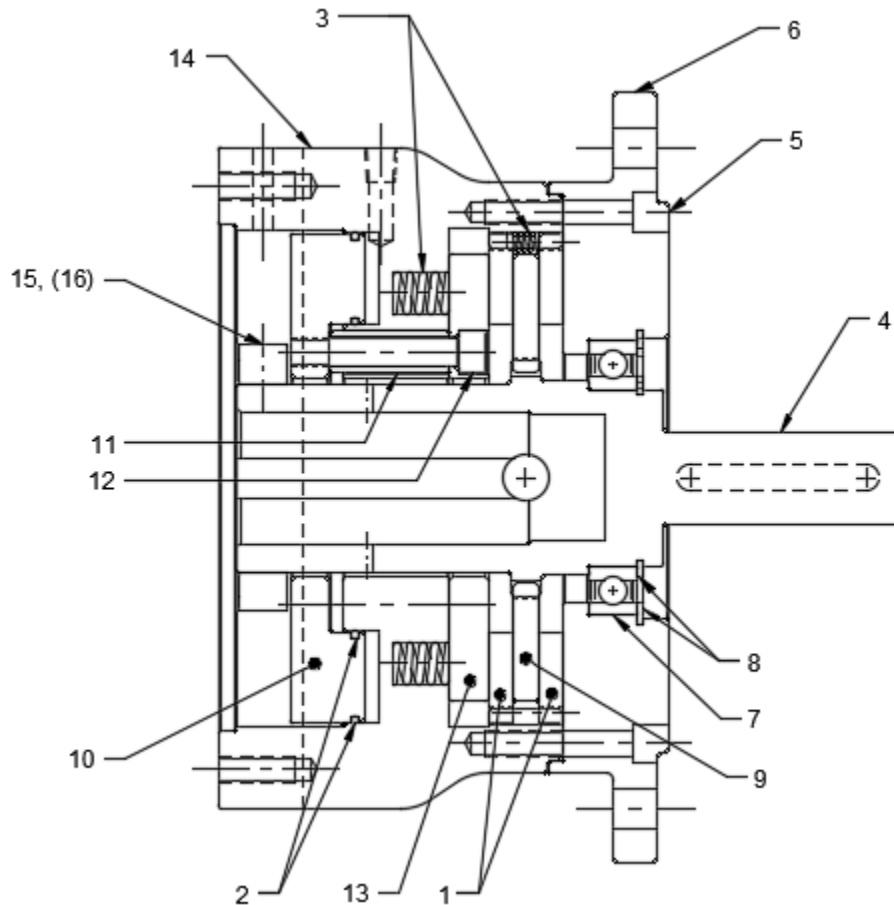
859-291-0849

[machiii.com](http://machiii.com)

[engineering@machiii.com](mailto:engineering@machiii.com)

# D8C2K-004

## Parts Diagram



REF#	DESCRIPTION & PARTS INCLUDED	QUANTITY	KIT NUMBER
	<b>REPAIR KIT</b>		<b>D8C2K-004-RPRK</b>
1	Friction Disc	2	
2	O-Ring	2	
3	Coil Spring	18	
4	DRIVE HUB	1	D8C2K-004-P001
	<b>ADAPTER KIT</b>		<b>D8C2K-004-ADPK</b>
5	Screw	8	
6	Adapter	1	
7	Bearing	1	
8	Retainer Ring	2	
9	DRIVE DISC	1	D8C2K-002-P005
	<b>PISTON KIT</b>		<b>D8C2K-001-PSTK</b>
10	Piston	1	
11	Spacer	3	
12	Screw	3	
13	Pressure Plate	1	
14	CYLINDER	1	D8C2K-004-P003
	<b>CLAMP COLLAR KIT</b>		<b>D8C2K-004-CLCK</b>
15	Clamp Collar	1	
16	Screw	1	

### PARTS KITS

The *Repair Kit* contains common wear items for this product. Users are encouraged to stock one or more repair kits considering the number of units installed and the potential downtime if machinery on which the unit is installed is critical equipment. To obtain current pricing and lead time for parts kits, contact customer service.

orders@machiii.com

### ADDITIONAL PRODUCT INFORMATION

For illustrated guides showing how Mach III products work, selection guidelines, product manuals, and installation and use recommendations:

<https://machiii.com/resources/how-our-products-work>

For information about how to order, return policy and warranty information:

<https://machiii.com/resources/how-to-order>



859-291-0849

machiii.com

engineering@machiii.com